



User Guide

Sysfilter for MS Excel

Version: SysExcel 1.0.10
Date: 20.10.04
Author: ECM Team

Sysfilter for Excel User Guide



Table of contents

1	Introduction.....	3
1.1	Installation requirements	4
1.2	Scope of delivery	4
1.3	License Agreements	5
2	Installation.....	5
3	Software Activation.....	7
3.1	Evaluate software	9
3.2	Registration.....	9
3.2.1	Purchase software.....	9
3.2.2	Please send the "software code" to ECM.....	9
3.2.3	Activate software.....	10
3.3	License transfer (only applicable for activated software)	10
4	Operation.....	15
4.1	Functions	15
4.1.1	Export and import functions.....	15
4.2	Syscat Module - File concatenation and splitting	17
4.2.1	Functions	17
4.2.2	Cat files	19
4.2.3	Split files.....	20
4.3	Menu Functions.....	21
5	Export.....	21
5.1	Export process.....	21
5.2	Export results / Translation with translation tools	22
5.3	Export options	23
5.3.1	Texts without tables	23
5.3.2	Export option: Texts in tables	24
5.4	"Soft Returns" / Export.....	25
6	Import	25
6.1	Post-processing.....	27
7	Export and import log.....	27
8	Line/word count.....	28
8.1	Sysfilter text count and calculation function	28
9	Support.....	31
10	New Features.....	31

1 Introduction

Thank you for buying one of our products. Our software is easy to use and offers you the possibility to optimize translation pre- and post-processing tasks. Please read this manual carefully to profit from all the advantages of Sysfilter for Excel. Should you have any question about our products do not hesitate to contact us.

Sysfilter for Excel exports texts from Microsoft Excel format to RTF format. The exported texts can be translated or edited in Microsoft Word.

In addition to text export and import function Sysfilter for Excel provides an **integrated file concatenation function**. This function enables you to concatenate (cat) the exported RTF files into one single RTF file or into several batches and to split them again after translation. This time-saving solution is especially valuable for agencies or translators working on projects with large file numbers. It is no longer necessary to open and close hundreds of files. Translation, spell check, and replacement of terms can be done in one single file.

Besides the option to overwrite the texts in Microsoft Word it is also possible to translate the texts using translation tools like **Trados, Wordfast, DejaVu or SDLX** and to profit from the advantages of translation memory systems. Once you have finished translation, Sysfilter automatically imports the translated texts into the original Excel files. Once you have finished translation, Sysfilter for Excel automatically imports the translated texts into the original Microsoft Excel files.

Import and export process are documented in a log file. This includes process information as well as line and word count. Sometimes you might have found it difficult to calculate the translation price of a project including Excel files. The Sysfilter count and calculation function enables you to **calculate the translation price during a simple export/import process**.

We hope that you will enjoy working with this tool.

Your ECM Team

- If you are trying out our trial version, you might find it interesting to read this manual which provides essential information about the features of Sysfilter for Excel

Notice:

Due to the automation of text export and import Sysfilter Tools **significantly reduce pre- and post-translation formatting and layout expenses** and thus help you to save a lot of time and money during translation process. **Nonetheless you should consider, that automated filter processes require layout control and, depending on the file structure, post layout. Especially for very complex files, we recommend that you test the suitability of Sysfilter Tools.** Please don't hesitate to order a free test version.

Sysfilter for Excel User Guide



1.1 Installation requirements

Sysfilter for Excel is for use with Microsoft's Windows operating systems.

Recommended operating systems: Windows* NT, 2000 or XP.

On Windows 98 operating systems or Windows ME you might not be able to use the full functionality of Sysfilter for Excel. If you have any doubts, please try out the trial version.

To use Sysfilter for Excel the following software needs to be installed on your computer and run without problems:

- MS Excel* 2000, 2002 or 2003
and
- MS Word* 2000, 2002 (Word XP) or 2003.



With older versions, the functions of Sysfilter for Excel are limited. If you want to use Sysfilters on systems with these configurations, please try out the trial version.

To guarantee full functionality of Sysfilter for Excel, we recommend, that you update your Microsoft programs to the latest service releases.

Programs marked with an asterisk (*) are programs of Microsoft Corporation and **not included** in the delivery.

Required disk space: 4.4 MB

1.2 Scope of delivery

The delivery of Sysfilter for Excel includes:

- the file "setup_S4E.exe"
- User Guide in PDF format

1.3 License Agreements

The use of Sysfilter is governed by license agreements. You must read and agree to the license agreement terms before using Sysfilter. Please click on the link below to review the current license agreements for the product: http://www.ecm-engineering.de/engl/prod_Lizenvereinbarungen.htm During the installation process the license agreements will appear on your desktop and you will be asked to read and accept them.

2 Installation

Installation is very easy. Double-click on the file Setup.exe and follow the instructions on your desktop.

And in detail:

1. Copy the file s to a folder on your hard disk
2. Double-click on the file within your "Windows Explorer" to start the installation process

If you follow the installation instructions without canceling the process various dialogues will appear on your desktop:

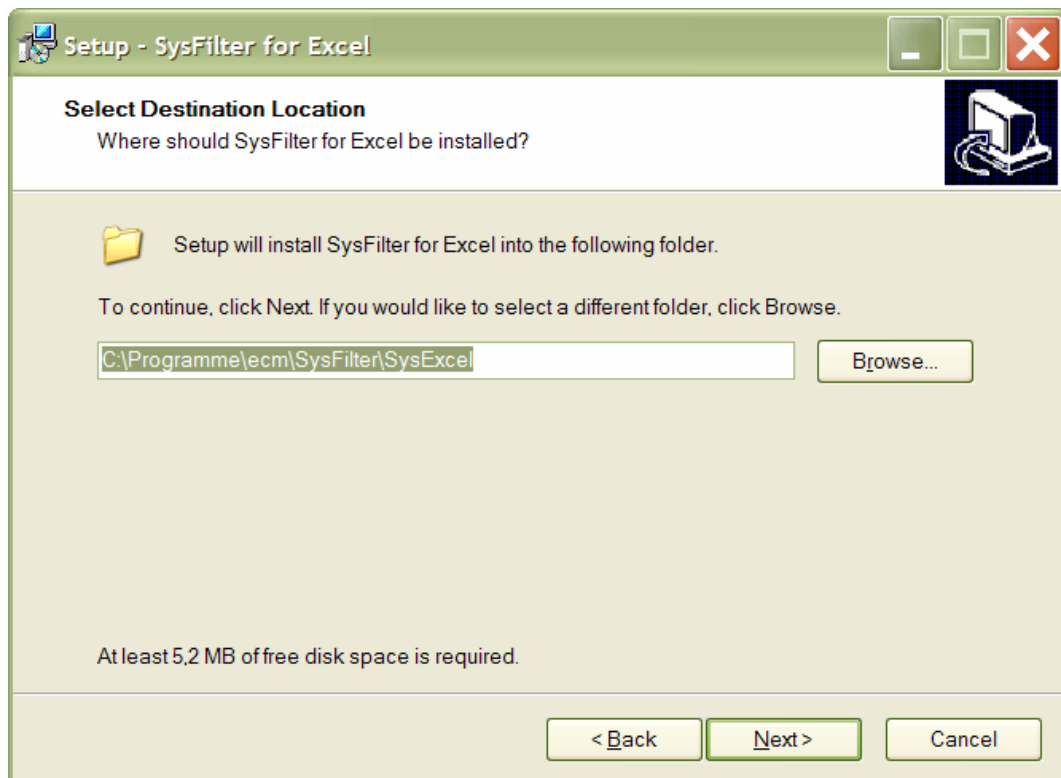
3. Language Selection. Here you can switch the language of the Sysfilter user interface to your preferred language (German, English or Spanish). The language setting can be changed any time.
4. Welcome Screen
The welcome screen appears, please continue.
5. License Agreements
You will now be asked to accept or decline the license agreements. You will only be able to continue the installation process if you accept the license agreements.

Sysfilter for Excel User Guide



Selection of Installation Path

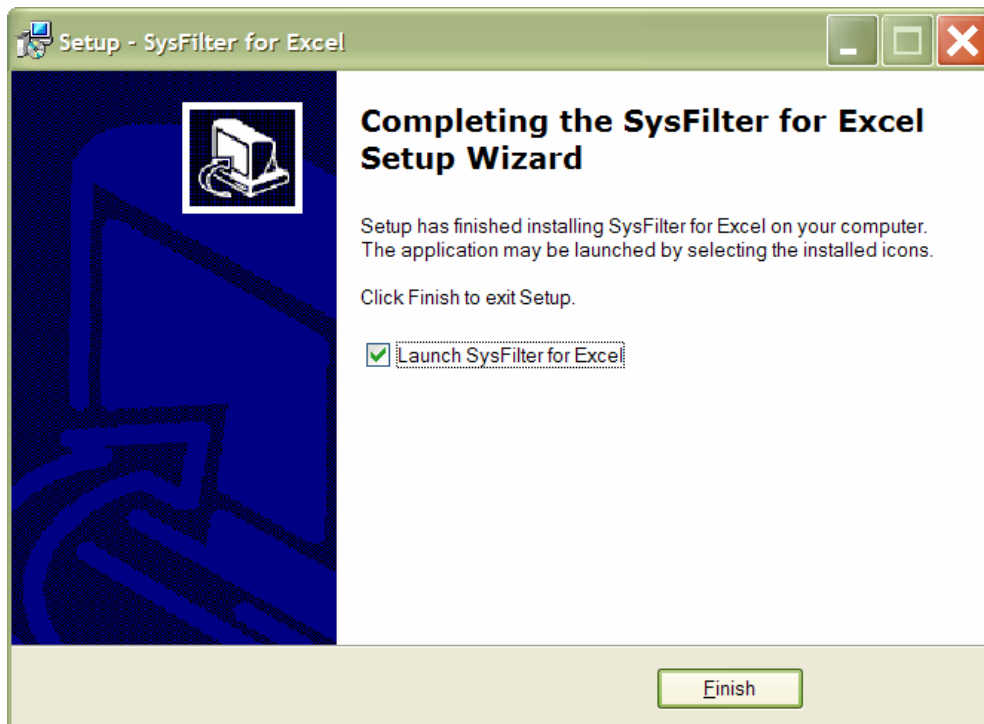
Accept the default values or define an installation directory on your hard disk.



[Figure 1]

6. Confirmation of Installation Values

7. The software will be installed und afterwards launched automatically, if the check box "Launch Sysfilter for Excel" is activated. If the check box is not activated, Sysfilter can be launched manually.



[Figure 2]

3 Software Activation

The full version of this program is activated with an activation key. A different software code is generated during each installation process. For detailed information about activation process, refer to 3.2.1, 3.2.2, 3.2.3).



Please note that the activation key can only be used once for one installation on one computer.

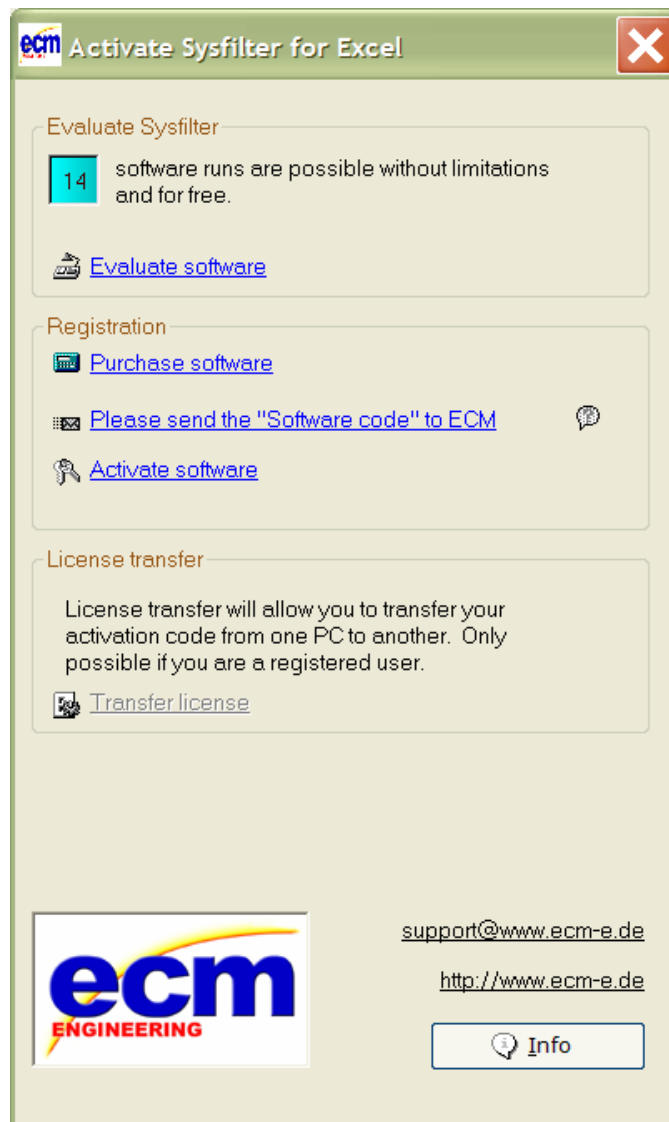
If you buy a full version of Sysfilter we will send you an e-mail with your activation key.

Use the "Info" command in the "?" menu to display the registration status of your software.

Sysfilter for Excel User Guide



If you launch the unregistered version of Sysfilter for Excel the following screen will appear:



[Figure 3]

You can select one of the following options:

1. Evaluate software
2. Registration
3. License transfer (only applicable for activated software)

Sysfilter for Excel User Guide



3.1 Evaluate software

You can launch Sysfilter 15 times and utilize the full functionality for the purpose of evaluation. In the upper left corner a counter is displayed, which indicates how often the software can be started in testing mode. After the software is activated, instead of the counter the letter "A" or "L" is displayed.



In systems with user account administration you have to be logged in as an administrator to evaluate Sysfilter functionality without limitations.

3.2 Registration

If you want to purchase Sysfilter and use the full version without restrictions, please proceed as follows:

3.2.1 Purchase software.

Click the link "Purchase software" in the activation screen. The link will lead you to the ECM engineering website, where you can find detailed information about how you can order Sysfilter.



Or you can simply purchase Sysfilter by sending us an email or a fax including your order.

e-mail: sales@ecm-engineering.de

Fax: 0049-(0)8263-960346

Be sure to include your name, address, and email address.

3.2.2 Please send the "software code" to ECM

After you have completed the ordering process, please send us the software code of your Sysfilter installation. If you click the link "Please send the software code" to ECM" an e-mail message will open automatically. The software code generated during installation will be displayed in the reference line. Simply send this email to **key@ecm-engineering.de**.

You can also view the software code of your Sysfilter installation if you point your mouse pointer at the question mark symbol which is displayed behind the link.

Sysfilter for Excel User Guide



3.2.3 Activate software

After we received your order (refer to 3.2.1) and your software code (refer to 3.2.2), we will send you an activation key within 24 hours (on working days).

For software activation please click the link "Activate software" in the activation screen. The following entry box will be displayed.

A screenshot of a software registration dialog box titled "Enter Registration Information". The dialog has a light green header bar. Below the title, there is a small icon of a computer monitor and a text instruction: "Please enter your unlock key below exactly as you received it. Then click on 'Save' or on 'Cancel'". There are two input fields: "Serial Number:" with the value "2062859714" and "Unlock Key:" which is empty. At the bottom, there are three buttons: "Purchase", "Cancel", and "Save".

[Figure 4]

Enter the activation key into the field "Unlock Key" and press "Save".
A confirmation message will be displayed.



The software is now activated!

After the activation process has been completed without errors, the letter "A" or "L" will be displayed in the upper left corner of the activation screen.

3.3 License transfer (only applicable for activated software)

If you want to install and use your already activated Sysfilter software on a new PC you have the possibility to transfer your license.



If you transfer your license to a new PC the existing Sysfilter activation on your old PC will be deleted automatically and testing mode will be restored.

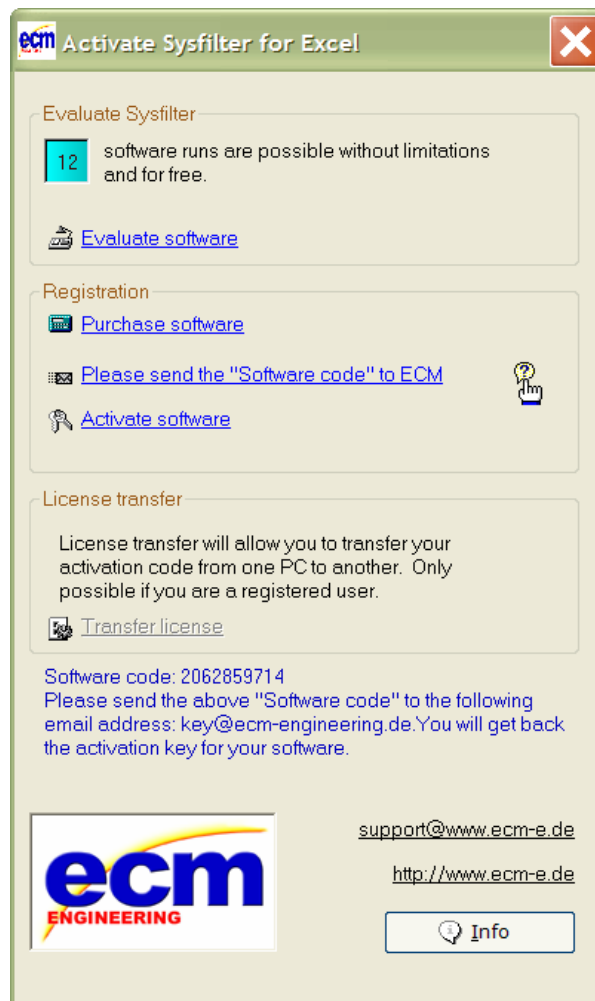
In systems with user account administration license transfer is only possible if you are logged in as **administrator**.

Sysfilter for Excel User Guide



To transfer your license proceed as follows:

1. **Install** the file "setup_S4SysExcel_xxx.exe" (refer to chapter 2. Installation) **on your new PC.**
2. **Launch Sysfilter on your new PC.** Point your mouse pointer at the question mark symbol which is displayed in the activation screen (see screenshot below).



[Figure 5, Example for all Sysfilters]

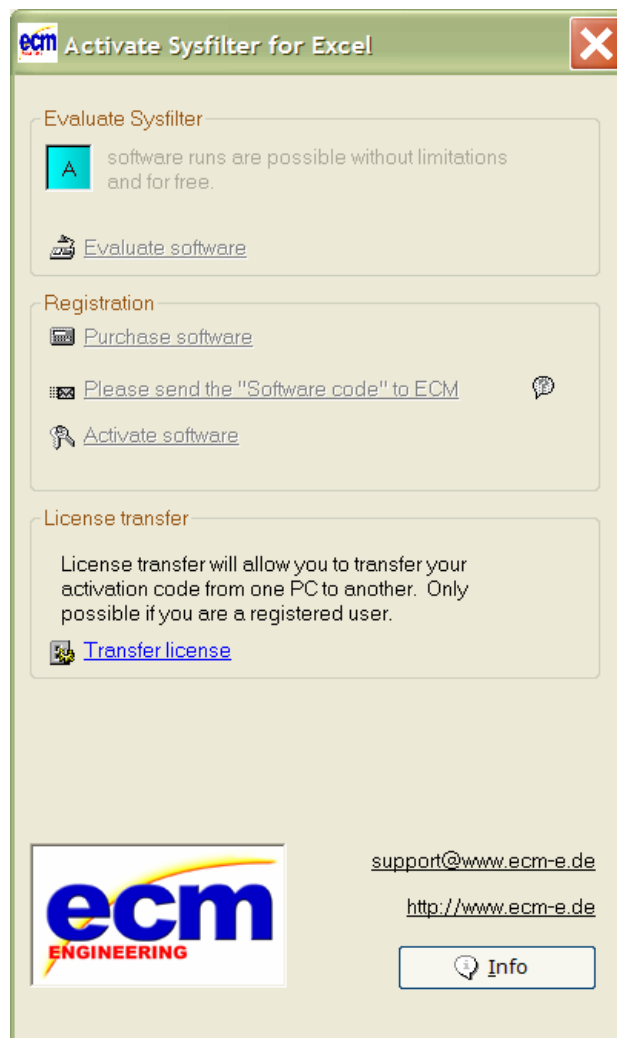
The software code of the new Sysfilter installation is displayed in the information box above the ECM logo.

3. **Note down the software code.**

Sysfilter for Excel User Guide



4. **Return to your old PC**, on which the activated Sysfilter is installed and open the activation screen. To do so, go to the main menu and click "?" and then "Register software". The activation screen will be displayed.



[Figure 6, Example for all Sysfilters]

5. Click the link "Transfer license".

Sysfilter for Excel User Guide



The following screen will be displayed.

The dialog box titled "Transfer License" has a green header. It contains a text input field labeled "Serial number from target PC:" which is currently empty. Below this field is a red warning message: "Warning: Using this feature will remove the license on this PC." At the bottom of the dialog, there are two buttons: "Generate License Information" and "Cancel". At the very bottom, there is another text input field labeled "Target License:" which is also empty.

[Figure 7]

6. Enter the **software code of the new PC** (refer to 2 and 3.) into the field "Serial number from target PC".

The dialog box titled "Transfer License" is shown again. The "Serial number from target PC:" field now contains the text "5343245234", which is highlighted with a green selection box. The warning message remains the same. The buttons are now "Are you sure? Yes" and "No". The "Target License:" field remains empty.

[Figure 8]



Please make sure that you have entered the correct software code of the Sysfilter software that is installed on your new PC into the field "serial number form target PC" before going on with the next steps.

Sysfilter for Excel User Guide



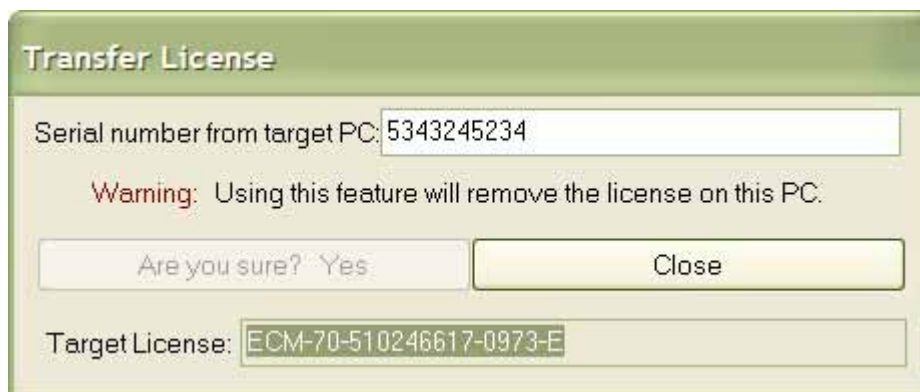
7. **Do not click the button "Generate License information"**, unless you really want to delete the activation of Sysfilter on this computer and you are sure that the software code in the field "serial number from target PC" is correct.



After you have entered the correct software code into the field "Serial number from target PC", click the button "Generate License Information" and confirm the warning message with "yes".

A new activation key for activation of Sysfilter on your new PC is generated.

The activation of Sysfilter on your old PC will be deleted automatically and the testing modus of Sysfilter will be restored.



[Figure 9]



The activation key for activation of Sysfilter full version on your new PC is displayed in the field "Target License".

8. Note down the new activation key, which is displayed in the field "Target License".

9. **Return to your new PC** and activate Sysfilter with the new activation key (For further details about activation, please refer to 3.2.3 Activate software).

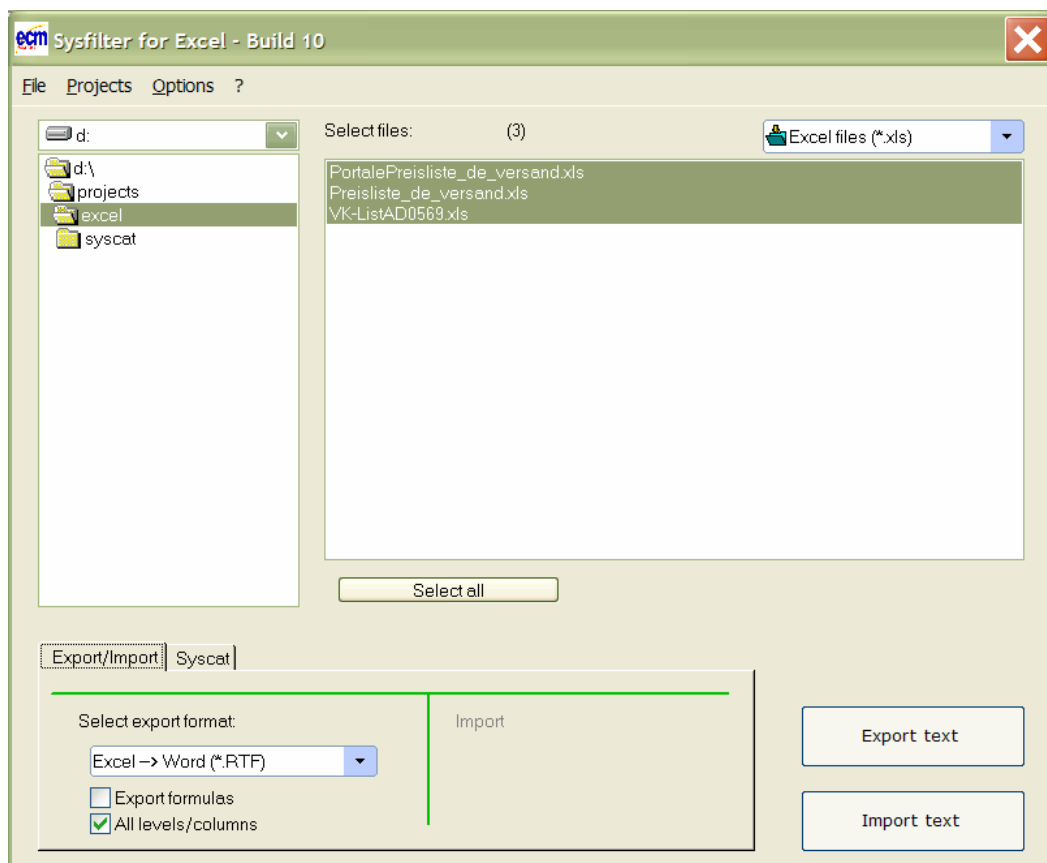
4 Operation

The interface of Sysfilter for Excel is easy to use. Follow your intuition. Sysfilter for Excel provides the following functions:

4.1 Functions

4.1.1 Export and import functions

The interface of Sysfilter for Excel is easy to use. Follow your intuition.



[Figure 10]

1. Selection of drive and directories
2. Selection of the file types in the combo box: You can choose between the following 3 possibilities:
 - To **export** select "**Excel-files (*.xls)**"
 - To **import** select "**RTF-files (*.rtf)**"
 - To display an overview of all files select "**All files (*.*)**".

Sysfilter for Excel User Guide



In case of a wrong selection, an error message appears. After clicking "OK" the correct configuration is set automatically.

3. Selection of the Excel files for export or import. By default all files in the actual folder are selected, but it is also possible to specify individual files within that folder.
4. Export options:
Excel files can be exported into the following formats:
 - RTF format without tables and optional with tables
 - TXT ("tab separated - ANSI ")
 - HTML
 - UNICODE
 - DOC - (table format)



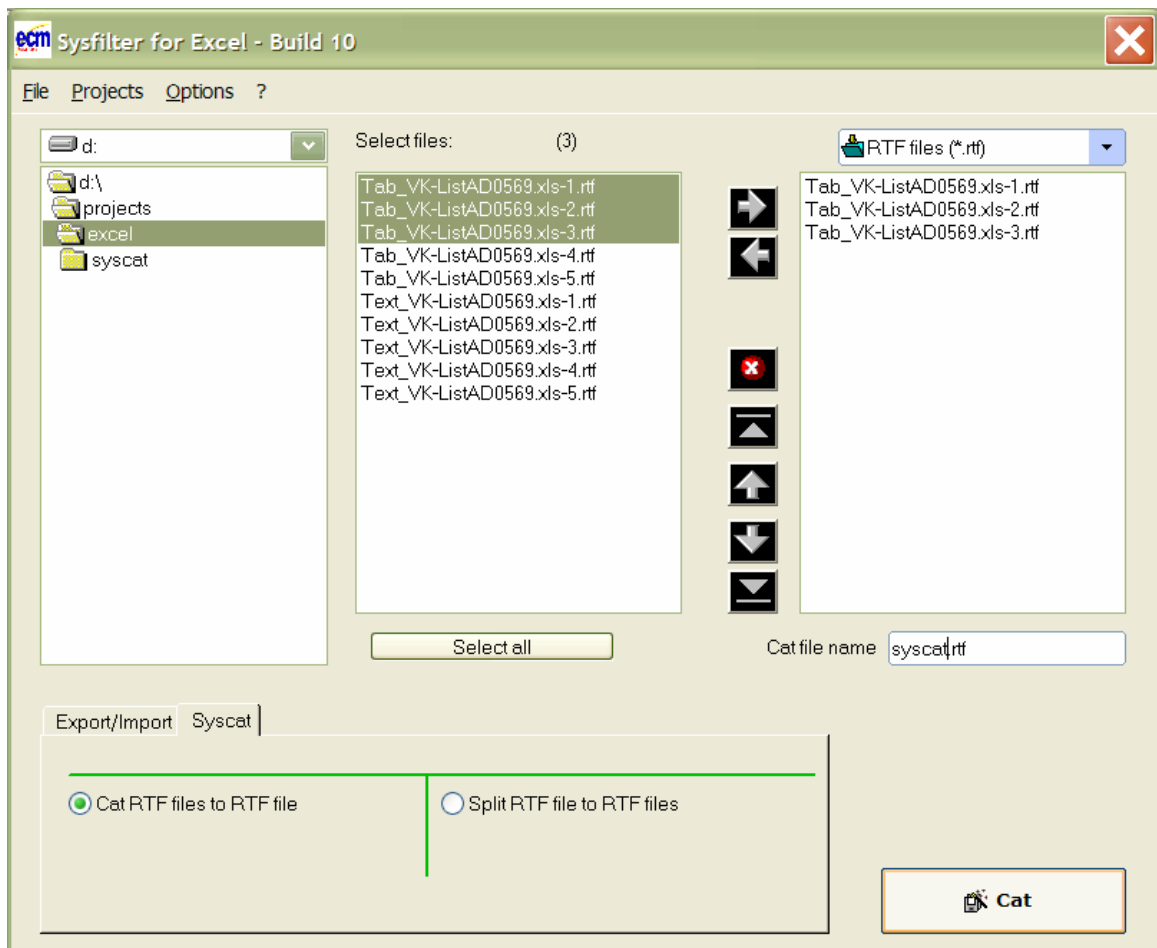
If you want to import the texts back into the original format after translation, please choose **"Excel --> Word (*.RTF)"** or **"Excel --> Word (*.RTF) - Tables "**. If you choose one of the other export options, it will not be possible to import the texts back into Excel format. The other options are for automatic conversion purpose only without possibility to reimport the text.

- **"Export formulas"** - Formulas of the Excel file are exported.
 - **"All levels/columns"** - Texts from hidden columns and all outlining levels are exported.
5. Further options for the RTF export:
 - Text without tables ("tagged" files)
 - Text in tables (export in table format)
 5. "Export text": Export of text from Excel files will be started.
 6. **"Import text"**: Import of text from RTF files back into original file format will be started. The RTF files and the Excel files must be placed in the same folder. Please make sure that file names have not been changed during translation, otherwise the files will not be recognized.

4.2 Syscat Module - File concatenation and splitting

This function enables you to concatenate (cat) the exported RTF files into one single RTF file or into several batches and to split them again after translation. This time-saving solution is especially valuable for agencies or translators working on projects with large file numbers. It is no longer necessary to open and close hundreds of files. Translation, spell check, and replacement of terms can be done in one single file.

4.2.1 Functions



[Figure 11, file catting]

1. Selection of drive and directories

File concatenation: Select the directory where the RTF files you want to cat are located. **File splitting:** Select the directory where the catted file(s) you want to split is (are) located.

Sysfilter for Excel User Guide



2. File list centre: File selection

By default all files in the actual folder are selected, But it is also possible to specify individual files within that folder.

Click on the file name to select an individual file.

Multiple file selection: Click first file, then keep the control key pressed to select more than one file. Continuous file block: Click first file in the block. Scroll to the last file you want in the block, then hold down the shift key and click file.

3. **File list, right:** All files in the right-hand list box will be catted or splitted, **no matter if they are highlighted or not.**

Button functions:

Use these buttons to select files and to change file order:

⇒ Include files to right-hand list box

⇐ Remove files from right-hand list box.

x Remove all files from right-hand list box. The files are not deleted, only removed from the list box.

–

^ Move selected entry to the uppermost position.

↑ Move down selected entry (one position).

↓ Move down selected entry (one position).

∨ Move selected entry to the lowermost position.

Move more than on file at a time:

Click one entry you want to move, then hold down the shift key while selecting further files. Continue to hold down the shift key and drag the selected files upwards or downwards in the list.

4.2.2 Cat files

1. Select Syscat tab
2. Activate radio box: "Cat RTF files to RTF file"
3. Move files you want to cat to the right-hand list box
Use function buttons (point 7 - 10) to change file order if necessary. The sorting order of the files in the right-hand list box defines the file order of the resulting cat file. You could for example use the buttons to sort the chapters of a manual.
4. You can change the file name of the resulting cat file here
5. Click the "Split" button.



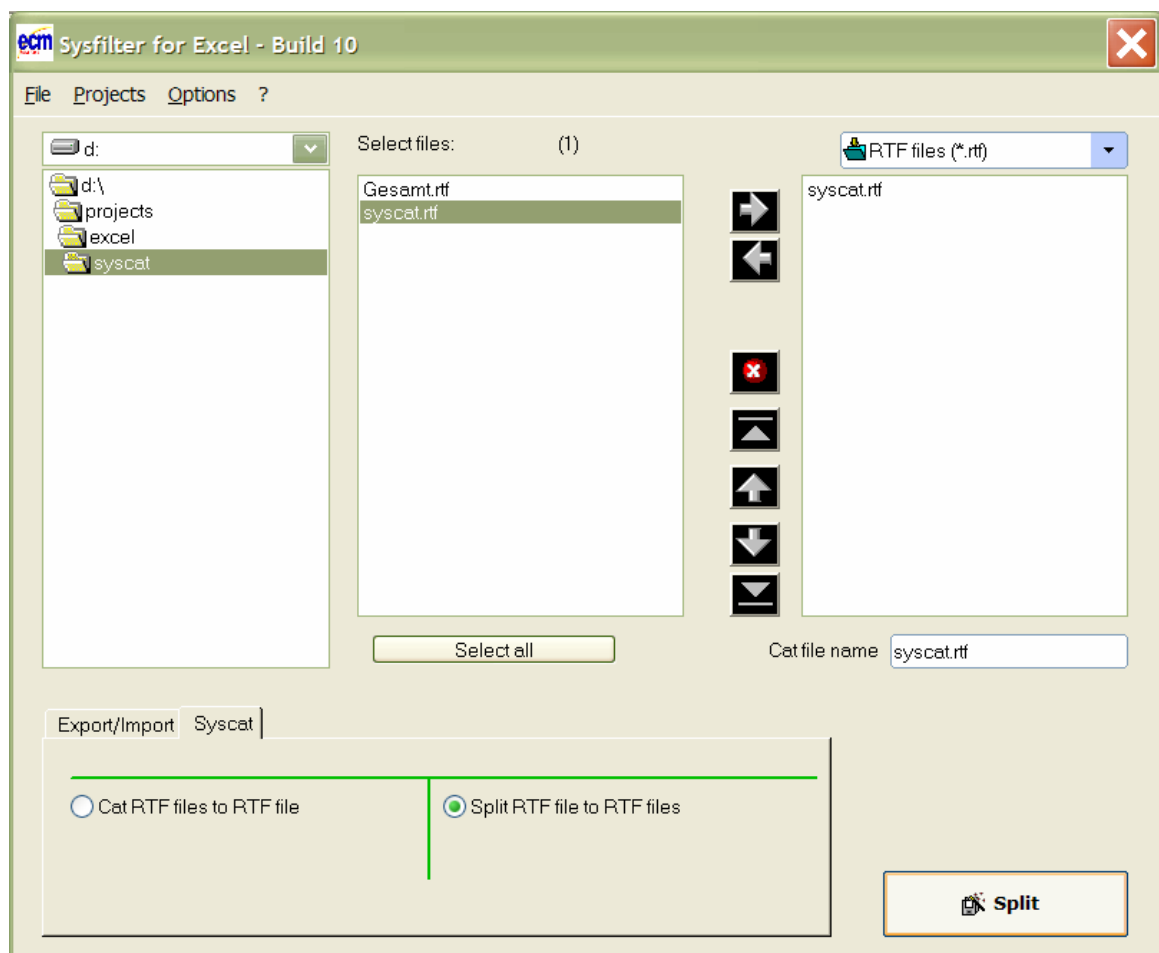
A subfolder named "Syscat" will be created in the current folder and the generated cat file will be saved in this folder



[Picture: Tarma/Peru]

4.2.3 Split files

1. Select Syscat tab
2. Activate radio box: "Cat RTF files to RTF file"
3. Move files you want to cat to the right-hand list box.
4. Click the **"Split"** button.



[Figure 12, file splitting]



The files will be splitted and the resulting files are saved into the selected folder.

4.3 Menu Functions

- File --> Quit
- Options --> Language Settings. Here you can switch the language of the Sysfilter for Excel user interface to your preferred language. This setting will be retained after closing the program.
- **Projects** --> Saves the path settings of the last 8 filtering projects. A time-consuming search for the preceding projects on your hard disk is not necessary. Just select your project from the project list to get to the directory you want.
- **?--> Information, Software registration**

5 Export

Sysfilter for Excel exports and imports all text objects of a Excel file.

5.1 Export process

Perform the settings you want:

1. Select "Excel files (*.xls)" in the drop down combo box in the right corner.

Export options:

- Please choose the export format you want.



If you want to import the texts back into the original format after translation, please choose **"Excel --> Word (*.RTF)"** or **"Excel --> Word (*.RTF) - Tables "**. If you choose one of the other export options, it will not be possible to import the texts back into Excel format.



Best results are achieved with the default settings.

- "Export formulas " → Formulas of the Excel file are exported.
- "All levels/columns" → Texts from hidden columns and outlining levels are exported
- Text without tables → ("tagged" files)
- Text in tables → (export in table format)

Sysfilter for Excel User Guide



Select the export options you want (refer to: 4.1.1 Export and import functions)



Highlight the Excel files which contain texts you want to export. Click onto the "Export text" button to launch the exporting process.



Progress indication bar appears now and the exporting process is monitored. Depending on the size of the files and the performance of your computer this process may take a few minutes. **Excel will be started in the background and appears on your desktop.**



To avoid possible side effects, we recommend that you do not work on your computer during the importing and exporting process.

If you did already export the texts of a certain project and run a second export Sysfilter for Excel will overwrite the existing RTF files in this folder. Please make sure that you really want to overwrite the existing files before launching a second exporting process!

5.2 Export results / Translation with translation tools

The exported files are now in the same folder as the Excel files.

Example: 1 Excel file name "name.xls" with 3 data sheets Tab1, Tab2 and Tab3

<u>File name (Excel)</u>	<u>Export format</u>	<u>Export file name</u>
Name.xls	-> RTF format (without tables)	Text_Name.xls-Tab1.rtf Text_Name.xls-Tab2.rtf Text_Name.xls-Tab3.rtf
Name.xls	-> RTF-Format (Tables)	Tab_Name.xls-Tab1.rtf Tab_Name.xls-Tab2.rtf Tab_Name.xls-Tab3.rtf
Name.xls	-> TXT ("tab separated- ANSI")	Name.xls-Tab1.txt Name.xls-Tab2.txt Name.xls-Tab3.txt
Name.xls	-> Unicode	Name.xls-Tab1-uni.txt Name.xls-Tab2-uni.txt Name.xls-Tab3-uni.txt
Name.xls	-> HTML	Name.xls.html + Name1.xls files (subfolder with various files)
Name.xls	-> DOC - (table format)	Doc_Name.xls-Tab1.doc Doc_Name.xls-Tab2.doc Doc_Name.xls-Tab3.doc

Sysfilter for Excel User Guide

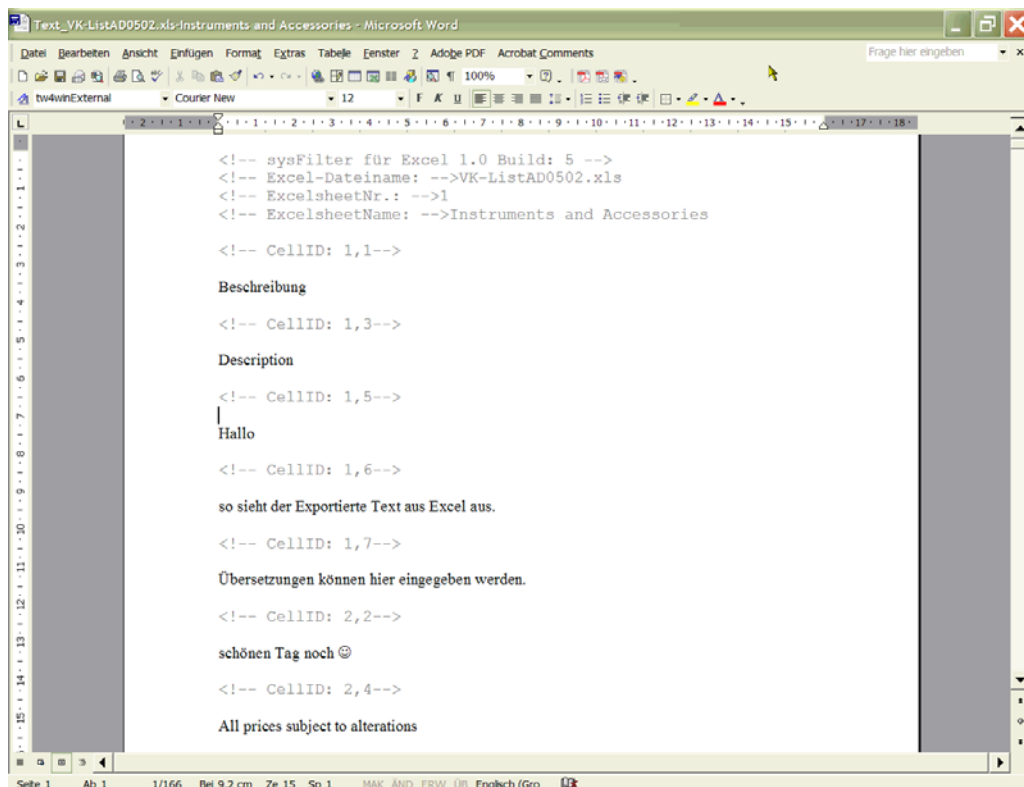


- File extension ".rtf". , which means that they are saved in Rich Text Format. Files are now ready for further processing. This text interchange format can be used in Word as well as in several other word processing programs and translation tools.
- The files can be translated directly with the translation tool **Trados** without further pre- or post-processing. Texts that must not be edited or translated are formatted as "tw4winexternal".

5.3 Export options

There are two possibilities to export your text and afterwards to import back. We recommend to use the standard setting.

5.3.1 Texts without tables



[Figure 13]



Please make sure that you don't change, delete or move the texts that are formatted in grey (filter information), otherwise errors will occur during the import process after translation. The filtering information is formatted as "tw4winExternal" and encapsulated between "<!--" and "-->".

Sysfilter for Excel User Guide



Only exception:

For translation of the exported RTF files with the translation tool **DéjàVu** you should format the grey texts (tw4winexternal) as invisible text using Search and Replace. Before you import the texts back into the Excel files they have to be made visible again.

5.3.2 Export option: Texts in tables

With this export method it is easier to recognize the translation context. It should be use fro small tables only.

Beschreibung	Description	TSK-Bez.	CZ-Best. Nr.	Euro
Bei sämtlichen Preisen Änderungen vorbehalten		All prices subject to alterations		
Fern-Messgeräte NT-Versionen				
Hallo	So sieht der Exportierte Text aus Excel aus.	Übersetzungen können hier eingegeben werden. schönen Tag noch ☺	1138-847	xxxx
Rondcom 31TIMS, kompl. mit PC-System	Rondcom 31TIMS, kompl. mit PC-System		1138-852	Xxx
Rondcom 41TIMS, kompl. mit PC-System	Rondcom 41TIMS, kompl. mit PC-System		1138-854	Xxx
Rondcom 55TIMS mit CNC-Tako, kompl. mit PC-System	Rondcom 55TIMS incl. CNC Gage head, compl. with PC-System		1200-350	Xxx
Rondcom 60TIMS, kompl. mit PC-System	Rondcom 60TIMS, compl. with PC-System		1138-855	Xxx
Rondcom 60TIMS inkl. CNC-Tako, kompl. mit PC-System	Rondcom 60TIMS, incl. CNC-Gage head compl. with PC-System		1199-266	Xxx
Rondcom 75 GB, kompl. mit PC-System X=700, Y=200, Z=1000	Rondcom 75 GB, compl. with PC-System X=700, Y=200, Z=1000		625007-900	xxxx
Rondcom 75 GB, kompl. mit PC-System X=700, Y=200, Z=1500	Rondcom 75 GB, compl. with PC-System X=700, Y=200, Z=1500		625007-901	
Messtaster "Neue Generation"				
Taskopf (R60A) mit mech. Kollisionschutz;<id>encl. Tastarm	Taskopf (R60A) mit elektr. mech. Kollisionschutz;<id>encl. Tastarm	Probe head (R30-R60A) with mechanical collision protection;<id>encl. stylus	E-DT-R954	1104-336
		Probe head (R45-R60A) with electr. mech. Collision protect.<id>encl. Stylus	E-DT-R834	1102-680
Messtaster				
Messtaster, kleine Messkraft;<id>5 mN, 800 µm (Special, wie Randtastarm)		Probe head with small force;<id>5 mN, 800µm (special, like roughness detector)	E-DT-R1046	625007-310
Messtaster, klein (Standard für R30-R41)		Probe head, small (R30-R40-R31-R41)	E-DT-R3246	625007-303
Messtaster, klein (Standard R45-R46)		Probe head, small (R45-R46)	E-DT-LK-R405	625007-306
Messtaster, klein (R60A)		Probe head, small (R60A)	E-DT-R744	1040-376

[Figure 14]

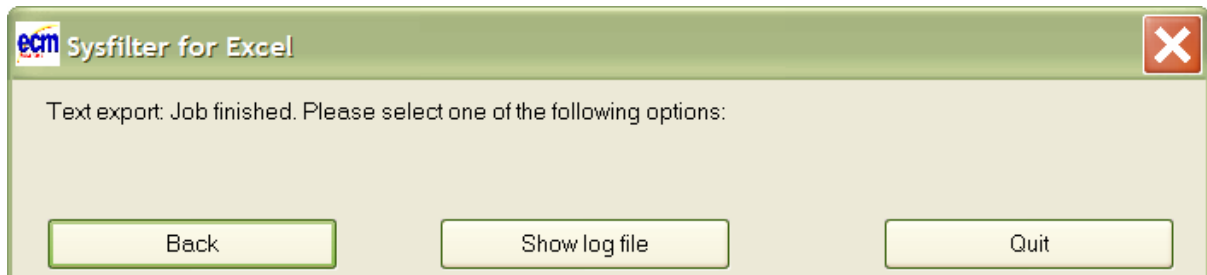


Please make sure that you don't delete, combine or add table cells, otherwise errors will occur during the import process after translation.



There could be problems exporting or importing files with more than aprox. 1,500 rows or more than 10 columns. It depends on the power of your computer. In this case we recommend you an export without tables.

After the export the following dialog appears:



[Figure 15]

- Back → Back to main menu
- Show log file → Log file is displayed. Information about version, file number and options.
- Quit → Closes the program

5.4 "Soft Returns" / Export

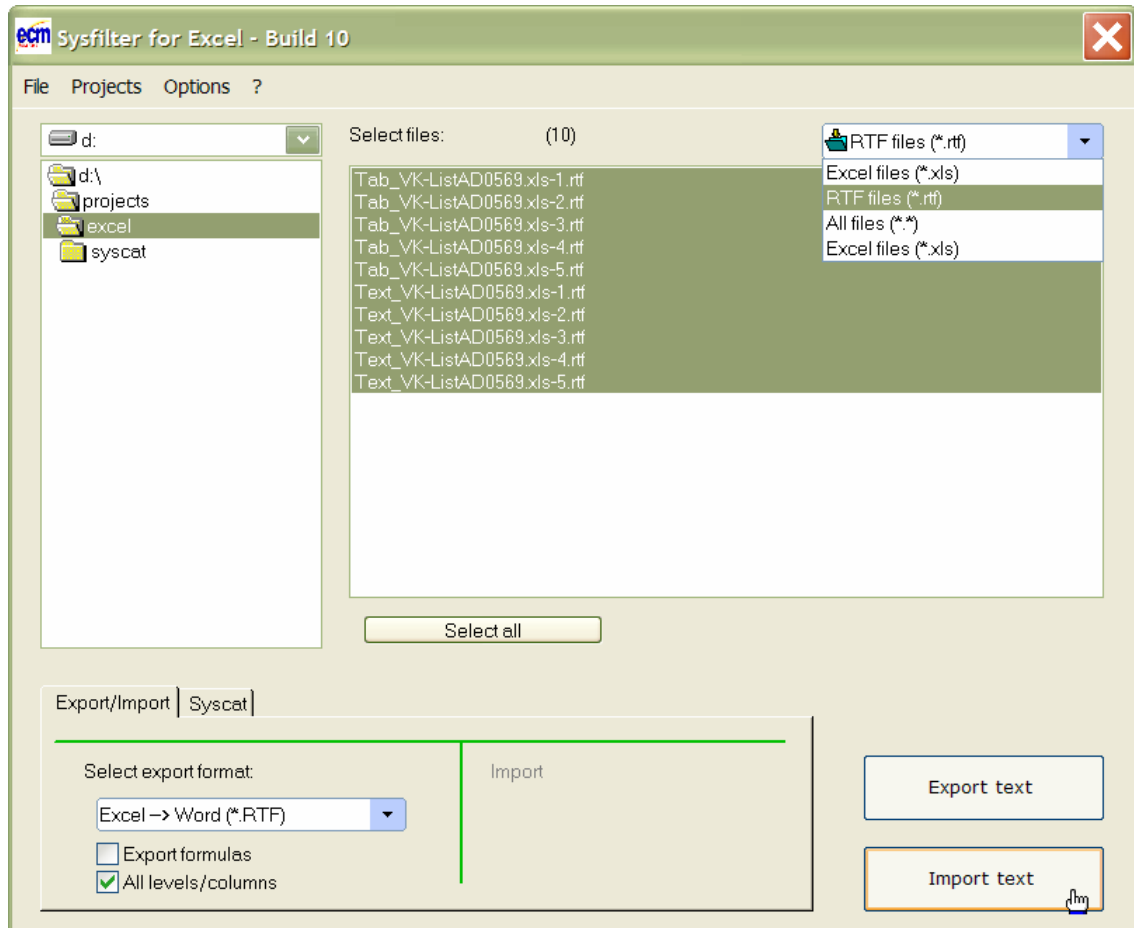
Soft returns will be replaced with a tag ("`<<lf>>`") during export from MS Excel to MS Word. After import process "`<<lf>>`" is replaced by a soft return.

6 Import

1. Select "RTF files (*.rtf)" in the combo box in the right corner. Select the folder **in which the Excel files and the translated RTF files are located** or use the project menu to get to one of your project folders. Select "RTF files (*.rtf)" in the drop down combo box in the right corner. The RTF-files will appear. Highlight the files you want to process.

Click onto the "Import text" button to launch the importing process.

Sysfilter for Excel User Guide



[Figure 16]



Progress indication bar appears now and the exporting process is monitored. Depending on the size of the files and the performance of your computer this process may take a few minutes.



To avoid possible side effects, we recommend that you do not work on your computer during the importing and exporting process.

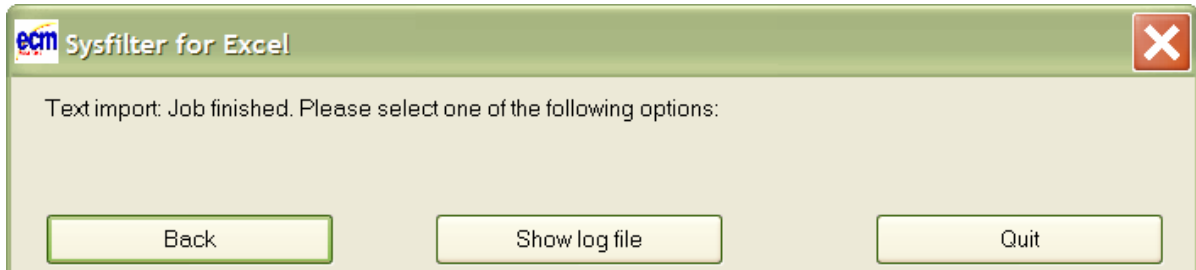


You should NEVER use your original files for import or export processing, only copies. Take your time to save the original files and your translated files in a separate folder!

Sysfilter for Excel User Guide



After the import the following dialog appears:



[Figure 17]

- Back → Back to main menu
- Show log file → Log file is displayed. Information about version, file number and options.
- Quit → Closes the program



The Excel files now contain the translated texts.

6.1 Post-processing



Remember that automated filter processes require layout control and, depending on the file structure, post layout.

7 Export and import log

During export and import a log file is generated and saved in the current directory ("export.log" / "import.log"). The log file contains information about the processing progress and of errors that may have occurred.



You should check the log files after each export and import. The log file can be opened with any common text editor.

8 Line/word count

Sysfilter offers the following possibilities of text count:

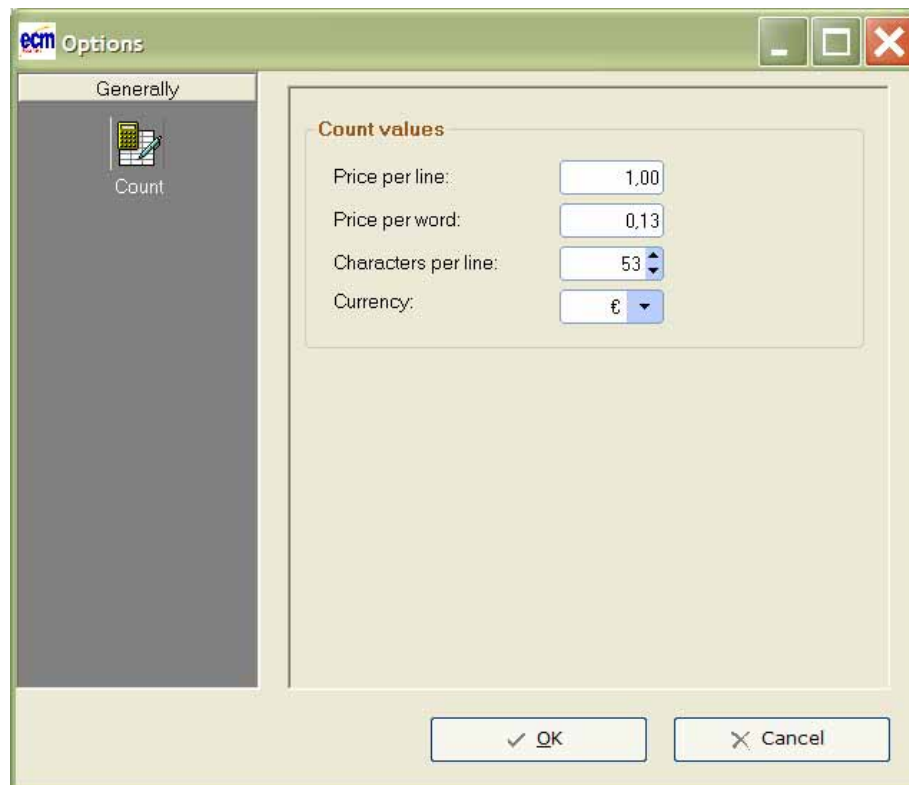
- Sysfilter count and calculation function for text count and price calculation.

8.1 Sysfilter text count and calculation function

Import and export process are documented in a log file. The log file contains information about import and export process as well as **line count**, **word count** and **translation price calculation**. Sometimes you might have found it difficult to calculate the translation price of a project including Excel files. The Sysfilter count and calculation function enables you to **calculate the translation price during a simple export/import process**.

To use the Sysfilter count and calculation function please proceed as follows:

Go to the main menu and follow the menu path **Options >> Options...** The following screen will be displayed.



[Figure 18]

Sysfilter for Excel User Guide



Modify the settings of word count and price calculation according to your needs.

During export/import the counting and calculation information is written into the log file.

To view the log file click onto "Show log file". The file contains information about the export process, the total character number, the number of lines (53 characters per line) and number of words.

The log file ("export.log/import.log") is saved in the same folder as the Excel files. If you want to save the log file into a different directory, proceed as follows:

Click onto "Show log file" after the export/import is completed. Then click right mouse button. A file saving dialog will be displayed. The log file can be opened with any common text editor.

Sysfilter for Excel User Guide



And that's what a Sysfilter log file looks like:

```
Sysfilter4Excel-Export.log - Editor
Datei Bearbeiten Format Ansicht ?
Option: text without tables
Option: all levels/columns
1 files selected
Excel started - Version: 10.0
Word started - Version: 10.0
*****
exporting VK-ListAD0569.xls
-- Instruments and Accessories (1) -- 2091 Cells
-- AIK GERMANY (2) -- 77 Cells
-- Training GERMANY (3) -- 67 Cells
-- Inst. Rest of EUROPE (4) -- 88 Cells
-- Training Rest of EUROPE (5) -- 68 Cells
-----
File statistic
-----
Total lines: (53 Characters)
1207,68
-----
Total words:
9603
-----
*****
Statistics
*****
Total characters:
64007
-----
Total lines: (53 Characters)
1207,68
-----
Total words:
9603
-----
Total cells:
2391
-----
Total tables:
5
-----
Number of files:
1
-----
Total (lines) in €:
1207,68
-----
Total (words) in €:
1248,39
-----
*****
```

[Figure 19]

Sysfilter for Excel User Guide



9 Support

If you have any problems or questions concerning Sysfilter for Excel please first check this user guide for help.

Check the "FAQ' s "section of our website for the latest information about the software.

Use the following e-mail address to get in touch with our support.

e-mail: <mailto:support@ecm-engineering.de>

Detailed information, sample files or screen shots will help us process your request more quickly and accurately.

Please make sure to include the following information:

Operating system:

Word Version:

Excel Version:

This will make it easier for us to respond to your request.

10 New Features

Sysfilters are updated on a regular basis. If you are already a client of ECM engineering it might be interesting for you to check our website for updates regularly. Clients owning a full version license can order the corresponding updates free of charge.