



# User Guide

## Sysfilter for Illustrator CS

Version: Sys4IllustratorCS1.0.06  
Date: 24.10.2004  
Author: ECM Team

# Sysfilter for Illustrator CS User Guide



**Table of contents**

- 1 Introduction..... 3**
- 1.1 Installation requirements ..... 4
- 1.2 Scope of delivery ..... 4
- 1.3 License Agreements..... 5
- 2 Installation..... 5**
- 3 Software Activation ..... 8**
- 3.1 Evaluate software ..... 9
- 3.2 Registration ..... 10
- 3.2.1 Purchase software..... 10
- 3.2.2 Please send the "software code" to ECM..... 10
- 3.2.3 Activate software ..... 10
- 3.3 License transfer (only applicable for activated software) ..... 12
- 4 Operation..... 16**
- 4.1 Functions ..... 16
- 4.1.1 Export and import functions..... 16
- 4.2 Syscat Modul - File concatenation and splitting ..... 19
- 4.2.1 Functions ..... 19
- 4.2.2 Cat files..... 21
- 4.2.3 Split files ..... 22
- 4.3 Menu Functions ..... 23
- 5 What is exported? ..... 23**
- 5.1 Export process..... 24
- 5.2 Export results / Translation with translation tools..... 25
- 6 Import..... 27**
- 6.1 Post-processing..... 30
- 6.1.1 Proofreading / Create PDF files ..... 30
- 7 Export and import log ..... 31**
- 8 Line/word count..... 31**
- 8.1 Sysfilter text count and calculation function ..... 31
- 8.2 Create file for count ..... 33
- 9 Support..... 35**
- 10 New Features ..... 35**

## 1 Introduction

Thank you for buying one of our products\*. Our software is easy to use and offers you the possibility to optimize translation pre- and post-processing tasks. Please read this manual carefully to profit from all the advantages of Sysfilter for Illustrator CS. Should you have any question about our products do not hesitate to contact us.

Sysfilter for Illustrator CS exports texts from Adobe Illustrator CS to Microsoft Word. You can choose to export **ai-files** or **eps-files**. The exported texts can be translated or edited in Microsoft Word. Before you start the import back into the original eps-format you can configure **various saving options**.

In addition to text export and import function Sysfilter for Illustrator CS provides an **integrated file concatenation function**. This function enables you to concatenate (cat) the exported RTF files into one single RTF file or into several batches and to split them again after translation. This time-saving solution is especially valuable for agencies or translators working on projects with large file numbers. It is no longer necessary to open and close hundreds of files. Translation, spell check, and replacement of terms can be done in one single file.

During the export process a count file without tags can be generated, which you can use for counting with your usual counting tool.

Besides the option to overwrite the texts in Microsoft Word it is also possible to translate the texts using translation tools like **Trados, Wordfast, DejaVu or SDLX** and to profit from the advantages of translation memory systems. Once you have finished translation, Sysfilter automatically imports the translated texts into the original Illustrator files.

Import and export process are documented in a log file. This includes process information as well as **line and word count** and a **price calculating function**. Sometimes you might have found it difficult to calculate the translation price of a project including Adobe Illustrator ai-files/eps-files. The Sysfilter count and calculation function enables you to **calculate the translation price during a simple export/import process**.

We hope that you will enjoy working with this tool.

Your ECM Team

\* If you are trying out our trial version, you might find it interesting to read this manual which provides essential information about the features of Sysfilter for Illustrator.

### Notice:

Due to the automation of text export and import Sysfilter Tools **significantly reduce pre- and post-translation formatting and layout expenses** and thus help you to save a lot of time and money during translation process. **Nonetheless you should consider, that automated filter processes require layout control and, depending on the file structure, post layout. Especially for very complex files, we recommend you to test the suitability of Sysfilter Tools.** Please don't hesitate to order a free test version. (wpolmann@ecm-engineering.de).

# Sysfilter for Illustrator CS User Guide



## 1.1 Installation requirements

Sysfilter for Illustrator CS is for use with Microsoft's Windows operating systems.

**Recommended operating systems:** Windows\* NT, 2000 or XP.

On Windows 98 operating systems or Windows ME you might not be able to use the full functionality of Sysfilter for Illustrator CS. If you have any doubts, please try out the trial version.

To use Sysfilter for Illustrator CS the following software needs to be installed on your PC and run without problems:

- Adobe\* Illustrator (CS)  
and
- MS Word\* 2000, 2002 (Word XP), 2003.



With older versions, the functions of Sysfilter for Illustrator CS are limited. If you want to use Sysfilters on systems with these configurations, please try out the trial version.

To guarantee full functionality of Sysfilter for Illustrator CS, we recommend, that you update your Microsoft programs to the latest service releases.

Programs marked with an asterisk (\*) are programs of Microsoft Corporation or Adobe and **not included** in the delivery.

Required disk space: 6 MB

## 1.2 Scope of delivery

The delivery of Sysfilter for Illustrator CS includes:

- the file "setup-Sys4IllustratorCSxxx.exe "
- User Guide in PDF format

## 1.3 License Agreements

The use of Sysfilter is governed by license agreements. You must read and agree to the license agreement terms before using Sysfilter. Please click on the link below to review the current license agreements for the product: [http://www.ecm-engineering.de/prod\\_Lizenvereinbarungen.htm](http://www.ecm-engineering.de/prod_Lizenvereinbarungen.htm) During the installation process the license agreements will appear on your desktop and you will be asked to read and accept them.

## 2 Installation

Installation is very easy. Double-click on the file Setup.exe and follow the instructions on your desktop.

And in detail:

1. Copy the file "setup-Sys4IllustratorCSxxx.exe " to a folder on your hard disk
2. Double-click on the file "Sys4IllustratorCSxxx.exe" within your "Windows Explorer" to start the installation process

If you follow the installation instructions without canceling the process various dialogues will appear on your desktop:

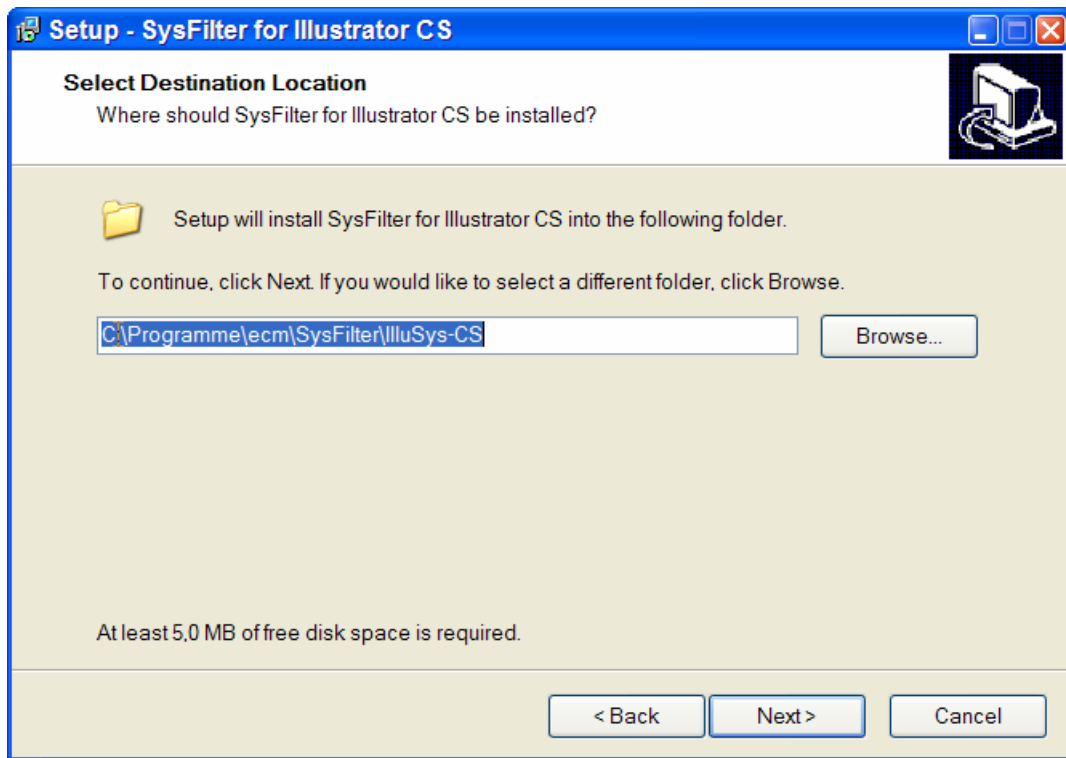
3. Language Selection. Here you can switch the language of the Sysfilter user interface to your preferred language (German, English, Spanish). The language setting can be changed any time.
4. Welcome Screen  
A welcome screen appears, please continue.
5. License Agreements  
You will now be asked to accept or decline the license agreements. You will only be able to continue the installation process if you accept the license agreements.

# Sysfilter for Illustrator CS User Guide



## Selection of Installation Path

Please accept the default values or define an installation directory on your hard disk.

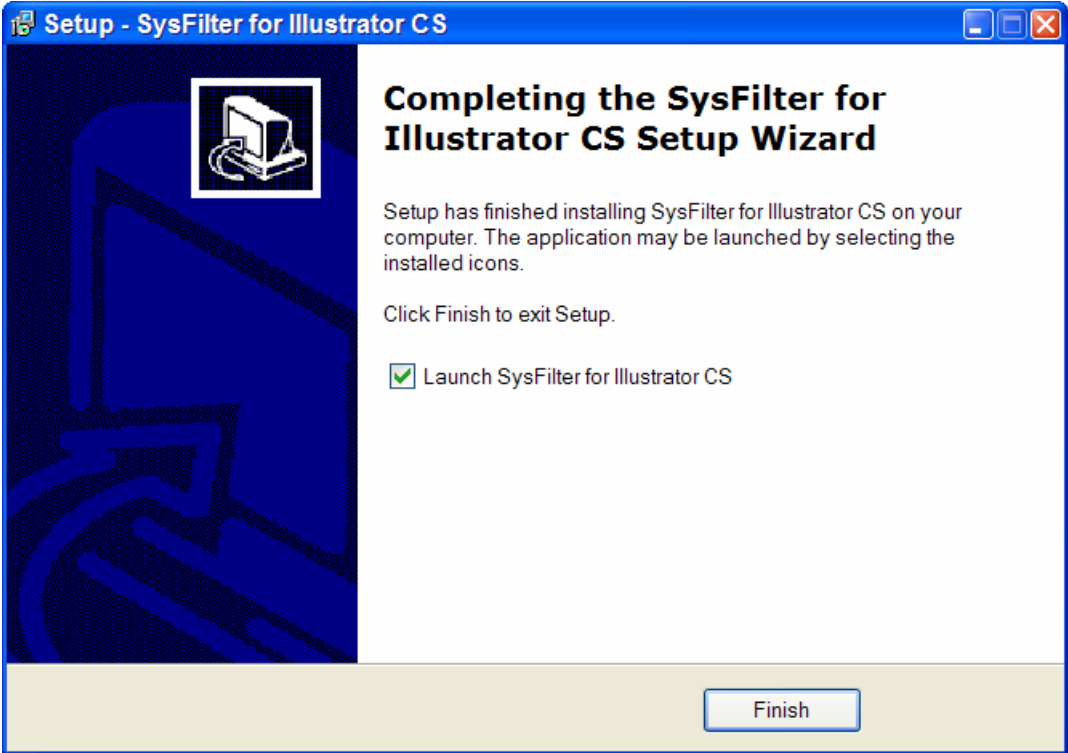


[Figure 1]

## 6. Confirmation of Installation Values

7. The software will be installed und afterwards launched automatically, if the check box "Launch Sysfilter for Illustrator" is activated. If the check box is not activated, Sysfilter can be launched manually.

# Sysfilter for Illustrator CS User Guide



[Figure 2]

# Sysfilter for Illustrator CS User Guide

---



## 3 Software Activation

The full version of this program is activated with an activation key. A different software code is generated during each installation process. For detailed information about activation process, refer to 3.2.1, 3.2.2, 3.2.3).

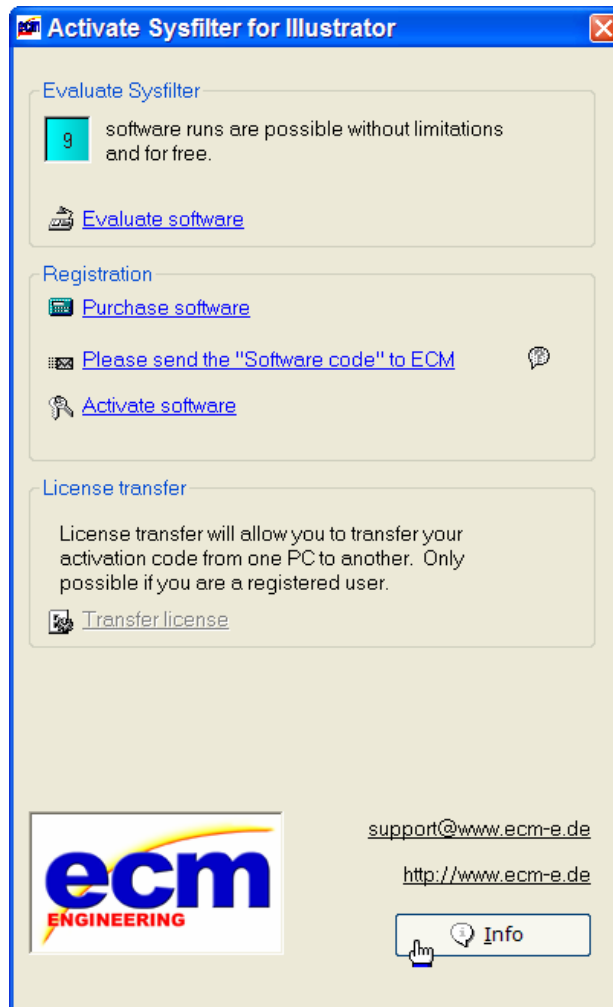


Please note that the activation key can only be used once for one installation on one computer.

If you buy a full version of Sysfilter we will send you an e-mail with your activation key.

Use the "Info" command in the "?" menu to display the registration status of your software.

If an unregistered version of Sysfilter for Illustrator CS is launched, the following activation screen will be displayed:



[Figure 3]

You can select one of the following options:

1. Evaluate software
2. Registration
3. License transfer (only applicable for activated software)

## 3.1 Evaluate software

You can launch Sysfilter 15 times and utilize the full functionality for the purpose of evaluation. In the upper left corner a counter is displayed, which indicates how often the software can be started in testing mode. After the software is activated, instead of the counter the letter "A" is displayed.

# Sysfilter for Illustrator CS User Guide



**In systems with user account administration you have to be logged in as an administrator to evaluate Sysfilter functionality without limitations.**

## 3.2 Registration

If you want to purchase Sysfilter and use the full version without restrictions, please proceed as follows:

### 3.2.1 Purchase software.

Click the link "Purchase software" in the activation screen. The link will lead you to the ECM engineering website, where you can find detailed information about how you can order Sysfilter.



Or you can simply purchase Sysfilter by sending us an email or a fax including your order.

**e-mail:** sales@ecm-engineering.de  
**Fax:** 0049-(0)8263-960346

Be sure to include your name, address, and email address.

### 3.2.2 Please send the "software code" to ECM

After you have completed the ordering process, please send us the software code of your Sysfilter installation. If you click the link "Please send the "software code" to ECM" an e-mail message will open automatically. The software code generated during installation will be displayed in the reference line. Simply send this email to **key@ecm-engineering.de**.

You can also view the software code of your Sysfilter installation if you point your mouse pointer at the question mark symbol which is displayed behind the link.

### 3.2.3 Activate software

After we received your order (refer to 3.2.1) and your software code (refer to 3.2.2), we will send you an activation key within 24 hours (on working days).

For software activation please click the link "Activate software" in the activation screen. The following entry box will be displayed.

# Sysfilter for Illustrator CS User Guide

A screenshot of a software dialog box titled "Enter Registration Information". The dialog has a blue header bar with the title. Below the header, there is a small icon of a computer monitor and a mouse, followed by the text: "Please enter your unlock key below exactly as you received it. Then click on 'Save' or on 'Cancel'." Below this text are two text input fields. The first field is labeled "Serial Number:" and contains the text "642601338". The second field is labeled "Unlock Key:" and is currently empty. At the bottom right of the dialog are two buttons: "Cancel" and "Save".

[Figure 4]

Enter the activation key in the field "Unlock Key" and press "Save".  
A confirmation message will be displayed.



**The software is now activated!**

After the activation process has been completed without errors, the letter "A" will be displayed in the upper left corner of the activation screen.

# Sysfilter for Illustrator CS User Guide



## 3.3 License transfer (only applicable for activated software)

If you want to install and use your already activated Sysfilter software on a new PC you have the possibility to transfer your license.

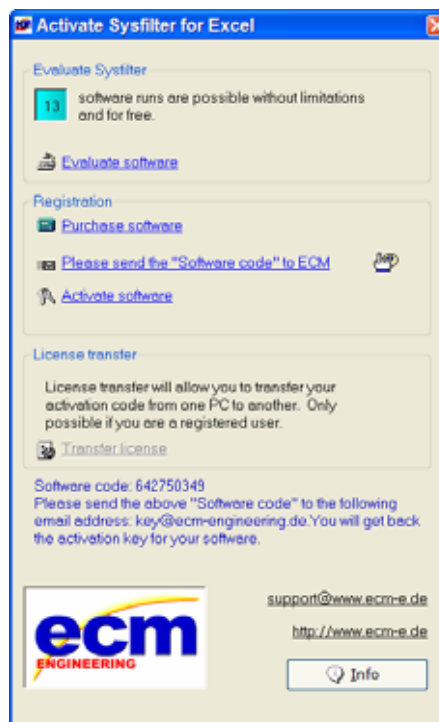


If you transfer your license to a new PC the existing Sysfilter activation on your old PC will be deleted automatically and testing mode will be restored.

In systems with user account administration license transfer is only possible if you are logged in as **administrator**.

To transfer your license please proceed as follows:

1. **Install** the file "setup-Sys4IllustratorCSxxx.exe " (refer to chapter 2. Installation) **on your new PC**.
2. **Launch Sysfilter on your new PC**. Point your mouse pointer at the question mark symbol which is displayed in the activation screen (see screenshot below).



[Figure 5, Example for all Sysfilters]

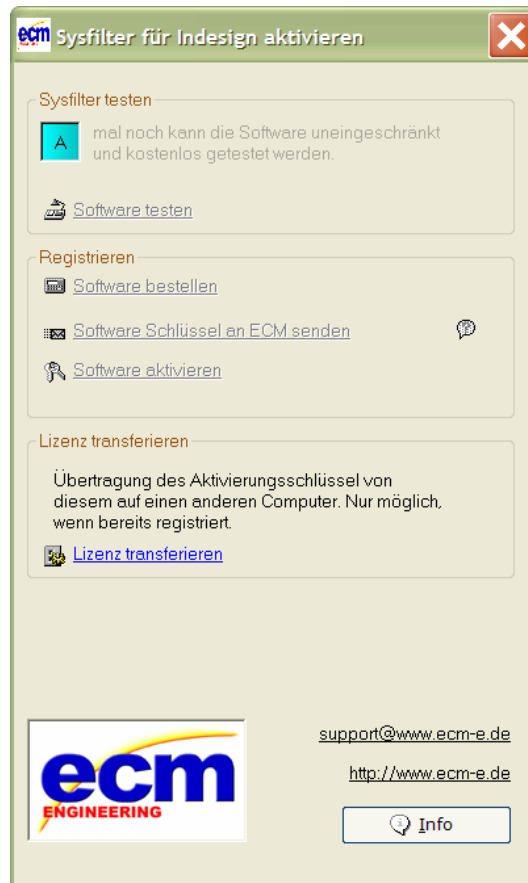
The software code of the new Sysfilter installation is displayed in the information box above the ECM logo.

### 3. Note down the software code.

# Sysfilter for Illustrator CS User Guide



4. **Return to your old PC**, on which the activated Sysfilter is installed and open the activation screen. To do so, go to the main menu and click "?" and then "Register software". The activation screen will be displayed.



[Figure 6, Example for all Sysfilters]

5. Click the link "Transfer license".

# Sysfilter for Illustrator CS User Guide



The following screen will be displayed.

The dialog box titled "Transfer License" has a green header. It contains a text input field labeled "Serial number from target PC:" which is currently empty. Below this field is a red warning message: "Warning: Using this feature will remove the license on this PC." At the bottom of the dialog, there are two buttons: "Generate License Information" and "Cancel". At the very bottom, there is another text input field labeled "Target License:" which is also empty.

[Figure 7]

6. Enter the **software code of the new PC** (refer to 2 and 3.) into the field "Serial number from target PC".

The dialog box titled "Transfer License" is shown again. The "Serial number from target PC:" field now contains the text "5343245234", which is highlighted in green. The red warning message remains. The buttons are now "Are you sure? Yes" and "No". The "Target License:" field remains empty.

[Figure 8]



**Please make sure that you have entered the correct software code** of the Sysfilter software that is installed on your new PC into the field "serial number form target PC" before going on with the next steps.

# Sysfilter for Illustrator CS User Guide



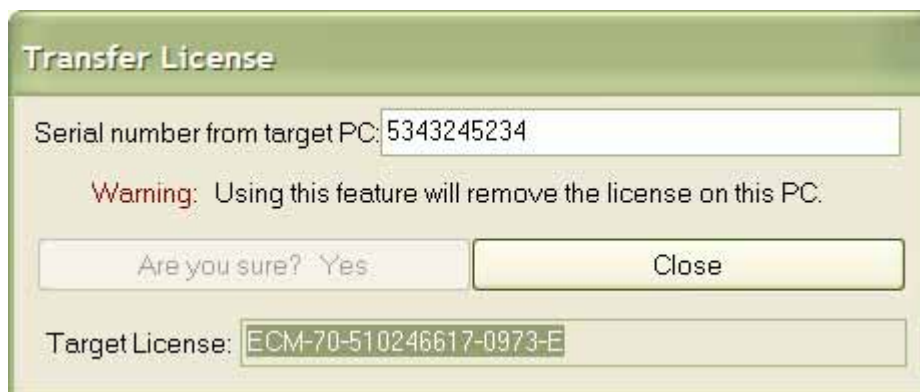
7. Do not click the button "Generate License information", unless you really want to delete the activation of Sysfilter on this computer and you are sure that the software code in the field "serial number from target PC" is correct.



After you have entered the correct software code into the field "Serial number from target PC", click the button "Generate License Information" and confirm the warning message with "yes".

A new activation key for activation of Sysfilter on your new PC is generated.

**The activation of Sysfilter on your old PC will be deleted automatically and the testing modus of Sysfilter will be restored.**



[Figure 9]



The activation key for activation of Sysfilter full version on your new PC is displayed in the field "Target License".

8. Note down the new activation key, which is displayed in the field "Target License".

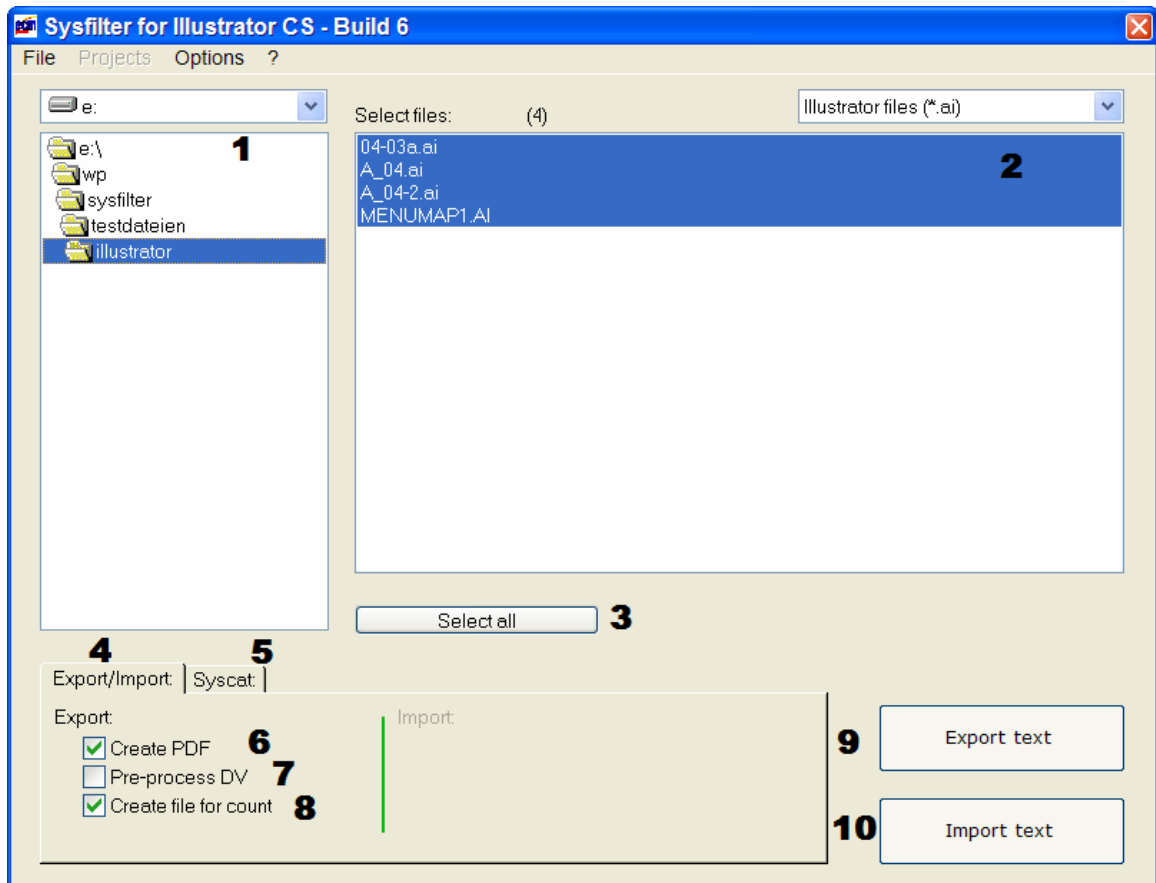
9. **Return to your new PC** and activate Sysfilter with the new activation key (For further details about activation, please refer to 3.2.3 Activate software).

## 4 Operation

The interface of Sysfilter for Illustrator CS is easy to use. Follow your intuition. Sysfilter for Illustrator provides the following functions:

### 4.1 Functions

#### 4.1.1 Export and import functions



[Figure 10, Export]

1. Selection of drive and directories (Fig. 10, **point 1**). Export: Select the directory where you copied the Illustrator files to. Import: Select the directory where copied the translated RTF files to.
2. Selection of file types (Fig. 10, **point 2**): You can select one of the following options:
  - to export select "**Illustrator-files (\*.ai)**" or "**EPS-files (\*.eps)**". All ai-files or eps-files in the selected directory are displayed.

# Sysfilter for Illustrator CS User Guide



- To **import** select "**RTF-files (\*.rtf)**" All RTF files in the selected directory are displayed.
  - To display an overview of all files select "**All files (\*.\*)**". All files in the selected directory are displayed.
3. Selection of files for filtering process (export or import) (Fig. 10, **point 3**). By default all files in the current directory are selected. But it is also possible to specify individual files within that folder.  
Click on the file name to select an individual file.  
Multiple file selection: Click first file, then keep the control key pressed to select more than one file. Continuous file block: Click first file in the block. Scroll to the last file you want in the block, then hold down the shift key and click file.

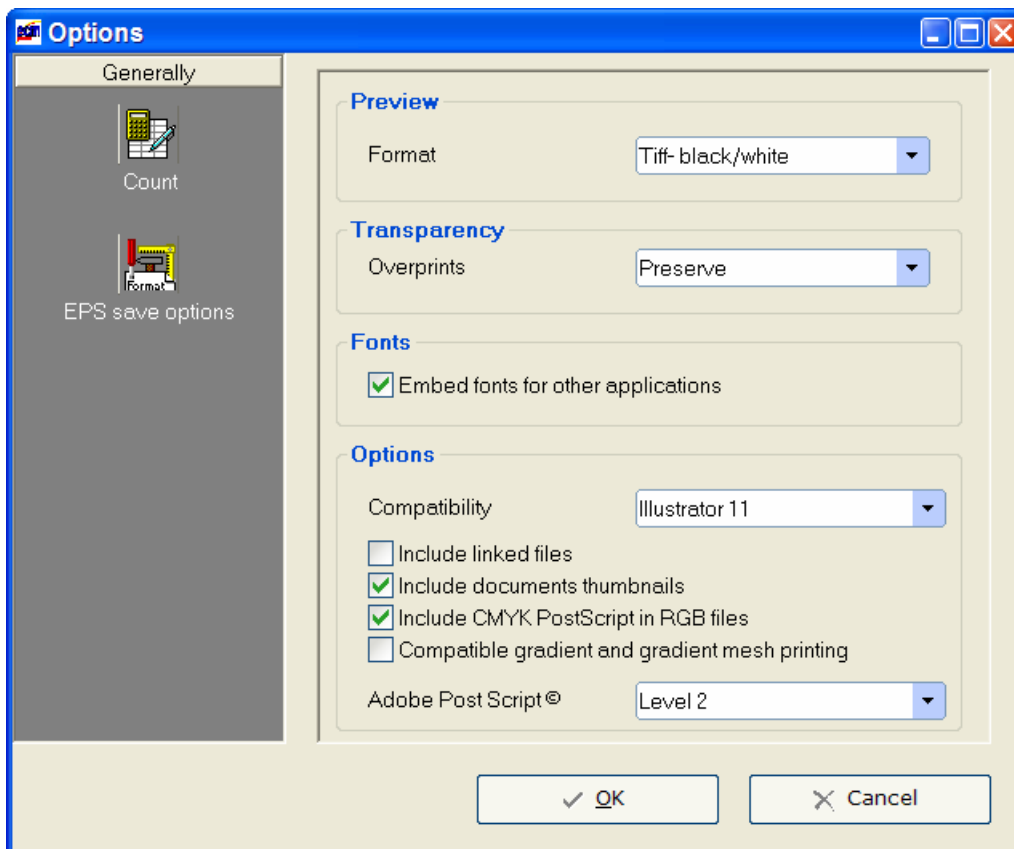
**Export options** (Fig. 10, **point 4**): Several export options are provided:

- "**Create PDF**" (Fig.10, **point 6**): During the export process PDF files of all selected Illustrator files are generated. File size will be kept as small as possible. The PDF files can be used as reference material during translation, proofreading and post layout processes.
  - "**Pre-process DV**" (Fig. 10, **point 7**) - Files are pre-processed for translation with the translation tool DéjàVue, i.e. tw4winexternals are formatted as hidden text.
  - "**Create file for count**" (Fig. 10, **point 8**) - During the export process a count file without tags is generated, which you can use for counting with your usual counting tool.
5. "**Export text**" (Fig. 10, **point 9**) Export of text from Illustrator will be started.
6. "**Import text**" (Fig.10, **point 10**) Import of text from RTF files back into original file format will be started. The RTF files and the Illustrator CS files must be placed in the same folder. Please make sure that file names have not been changed during translation, otherwise the files will not be recognized.

## 7. Import options



Saving options for eps-files: Before starting text import back into the **EPS-files** you can configure the following saving options:



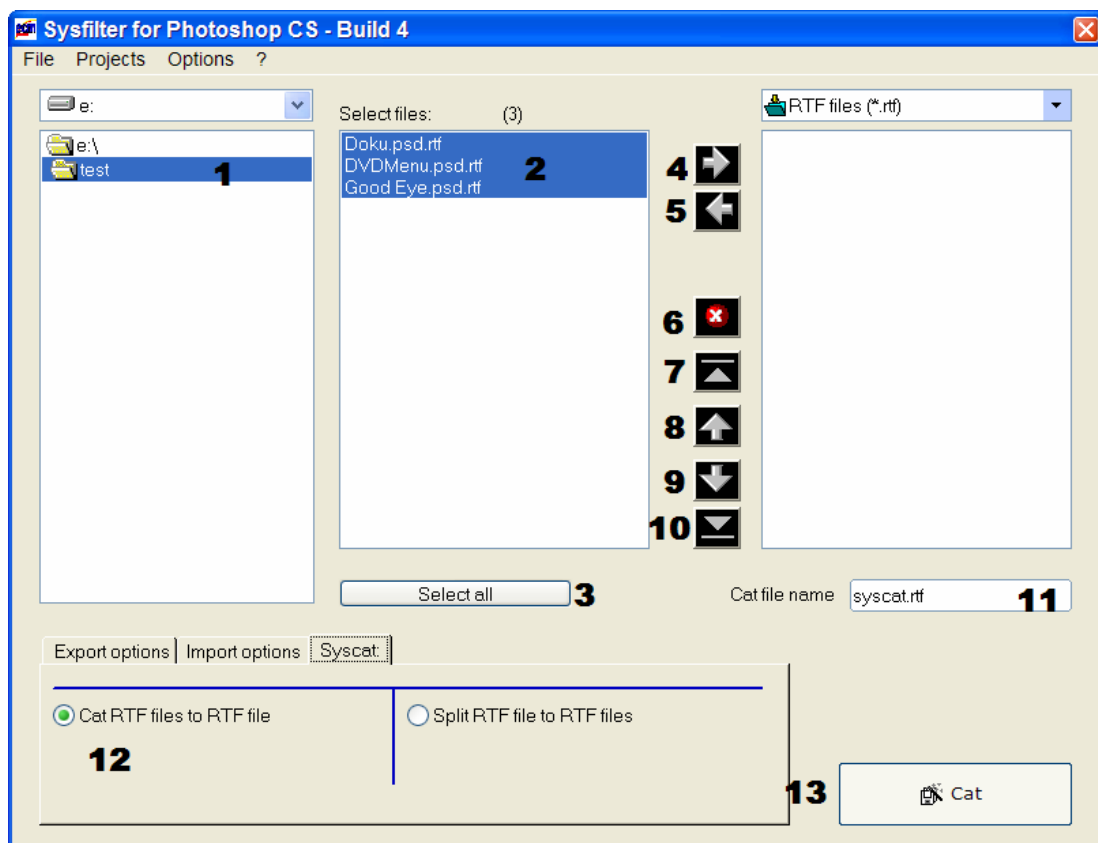
[Figure 11]

If you want to display the eps configuration screen go to the main menu and follow the path **Options >> Options >> EPS save options**.

## 4.2 Syscat Module - File concatenation and splitting

This function enables you to concatenate (cat) the exported RTF files into one single RTF file or into several batches and to split them again after translation. This time-saving solution is especially valuable for agencies or translators working on projects with large file numbers. It is no longer necessary to open and close hundreds of files. Translation, spell check, and replacement of terms can be done in one single file.

### 4.2.1 Functions



[Figure 12, file catting, example for all Sysfilters]

1. Selection of drive and directories (**point 1**). File concatenation: Select the directory where the RTF files you want to cat are located. File splitting: Select the directory where the catted file(s) you want to split is (are) located.

2. Selection of files for file processing (cat or split) (**point 2/3**). By default all files in the actual folder are selected, But it is also possible to specify individual files within that folder.

# Sysfilter for Illustrator CS User Guide



Click on the file name to select an individual file.

Multiple file selection: Click first file, then keep the control key pressed to select more than one file. Continuous file block: Click first file in the block. Scroll to the last file you want in the block, then hold down the shift key and click file.

3. All files in the right-hand list box will be catted or splitted, no matter if they are highlighted or not

## Button functions:

Use these buttons to select files and to change file order:

⇒ Include files to right-hand list box (**point 4**)

⇐ Remove files from right-hand list box (**point 5**)

x Remove all files from right-hand list box. The files are not deleted, only removed from the list box. (**point 6**)

—

^ Move selected entry to the uppermost position. (**point 7**)

↑ Move down selected entry (one position). (**point 8**)

↓ Move down selected entry (one position). (**point 9**)

∨ Move selected entry to the lowermost position. (**point 10**)

## Move more than on file at a time:

Click one entry you want to move, then hold down the shift key while selecting further files. Continue to hold down the shift key and drag the selected files upwards or downwards in the list.

## 4.2.2 Cat files

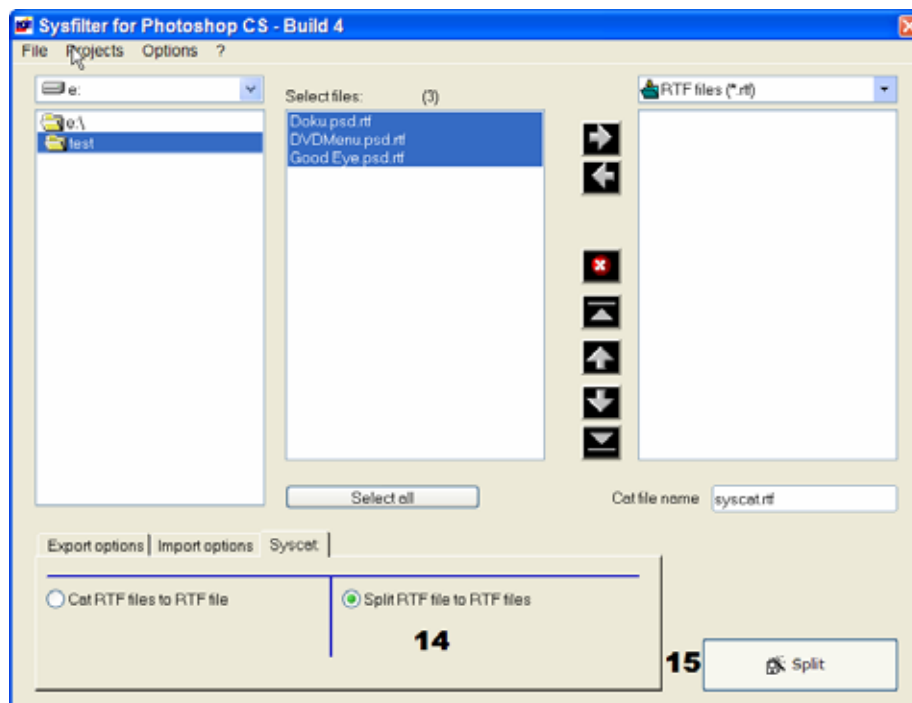
1. Select Syscat tab
2. Activate radio box: "Cat RTF files to RTF file" (**point 12**)
3. Move files you want to cat to the right-hand list box  
Use function buttons (point 7 - 10) to change file order if necessary. The sorting order of the files in the right-hand list box defines the file order of the resulting cat file. You could for example use the buttons to sort the chapters of a manual.  
(**points 4 - 10**)
4. You can change the file name of the resulting cat file here (**point 11**)
5. Click the "Cat" button (**point 13**).



A subfolder named "Syscat" will be created in the current folder and the generated cat file will be saved in this folder

## 4.2.3 Split files

1. Select Syscat tab
2. Activate radio box: "Split RTF files to RTF file" (**point 14**)
3. Move files you want to cat to the right-hand list box
4. Click the "Split" button. (**point 15**)



[Figure 13, file splitting, example for all Sysfilters]



The files will be splitted and the resulting files are saved into the selected folder.

## 4.3 Menu Functions

- **File --> Quit**
- **Options --> Language Settings.** Here you can switch the language of the Sysfilter user interface to your preferred language. This setting will be retained after closing the program.
- **Extras --> Delete TMP files.** Deletes tmp files in current directory This function is no longer needed for newer versions of Adobe Illustrator.
- **Options--> Options --> Count.** Under this menu item you can select the setting of the Sysfilter counting and calculation function
- **Options --> Options --> EPS save options.** Under this menu item you can select the setting of the EPS saving options.
- **Projects -->**Saves the path settings of the last 8 filtering projects. A time-consuming search for the preceding projects on your hard disk is not necessary. Just select your project from the project list to get to the directory you want.
- **?--> Information, Software registration**

## 5 What is exported?

Sysfilter for Illustrator CS exports and imports all texts from Illustrator ai-files or eps-files.

# Sysfilter for Illustrator CS User Guide

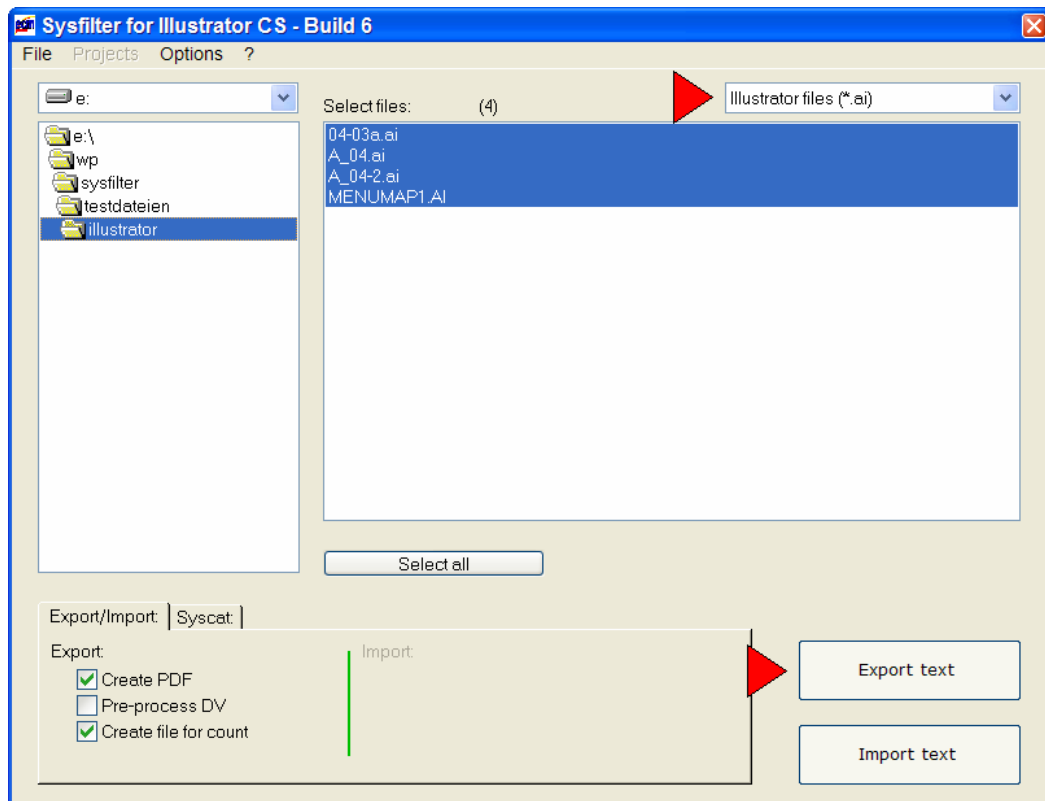


## 5.1 Export process

Select the folder in which the Illustrator CS files are located. The ai-files/eps-files are displayed, as shown in fig. 14.

Perform the settings you want:

1. Select "**Illustrator-files (\*.ai)**" or "**EPS-files (\*.eps)**" in the drop down combo box in the right corner.



[Figure 14]



Select the export options you want (refer to: 4.1.1 Export and import functions)



Highlight the Illustrator CS files which contain texts you want to export. Click onto the "Export text" button to launch the exporting process.

# Sysfilter for Illustrator CS User Guide



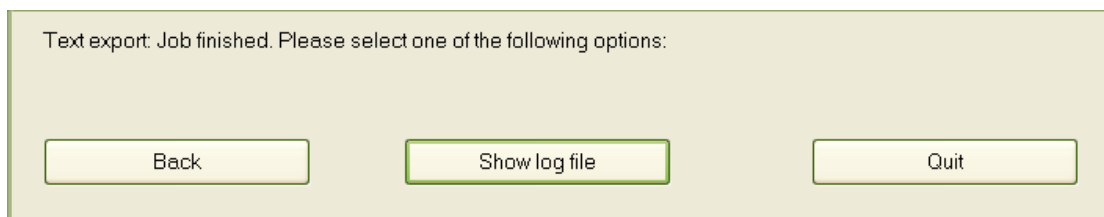
Progress indication bar appears now and the exporting process is monitored. Depending on the size of the files and the performance of your computer this process may take a few minutes. **Illustrator CS will be started in the background and appears on your desktop.**



To avoid possible side effects, we recommend that you do not work on your computer during the importing and exporting process.

**If you did already export the texts of a certain project and run a second export Sysfilter for Illustrator CS will overwrite the existing RTF files in this folder. Please make sure that you really want to overwrite the existing files before launching a second exporting process!**

After the export the following dialog appears:



[Figure 15]

- Back → Back to main menu
- Show log file → Log file is displayed. Information about version, file number and options.
- Close → Closes the program

## 5.2 Export results / Translation with translation tools

The exported files are now in the same folder as the Illustrator files.

The name of the export files consists of the name of the Illustrator files including the file extension ".ai". or ".eps".

Example: 1 Illustrator file named „Name.ai“

File name (Illustrator)	Export option:	Export file name
Name.ai	-> Standard settings	Name.ai.rtf
	-> "Create PDF"	Name.pdf
	-> "Create file for count"	Count_ Name.ai.rtf

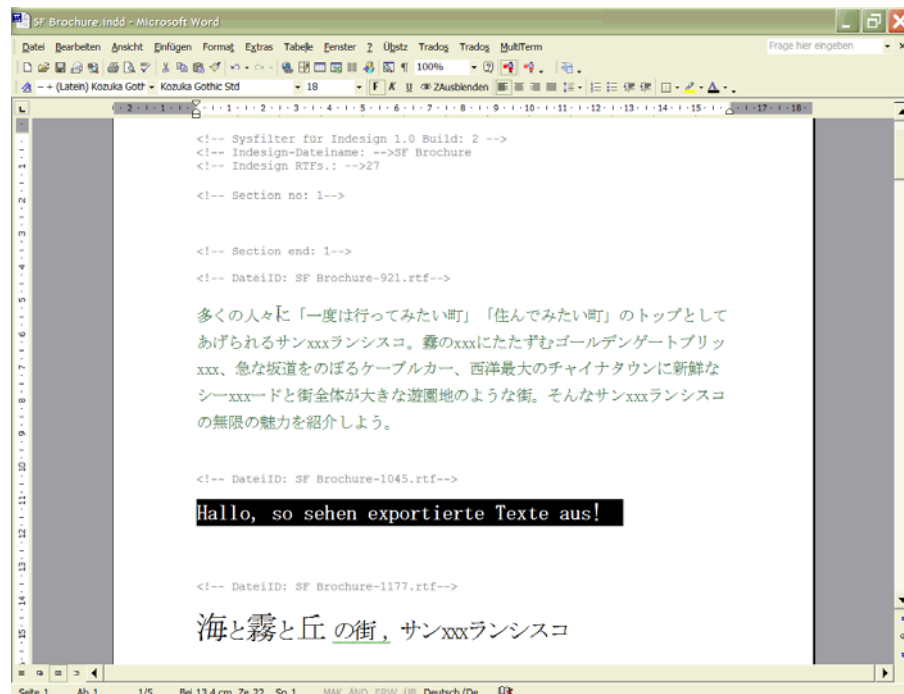
Example: 2 EPS-file named „Name.eps“

File name (EPS)	Export option:	Export file name
Name.eps	-> Standard settings	Name.eps.rtf
	-> "Create PDF"	Name.pdf
	-> "Create file for count"	Count_ Name.eps.rtf

# Sysfilter for Illustrator CS User Guide



- File extension ".rtf". The files are saved in the text interchange format "rtf" (rich text format). Files are now ready for further processing. This text interchange format can be used in Word as well as in several other word processing programs and translation tools.
- The files can be translated directly with the translation tool **Trados** without further pre- or post-processing. Texts that must not be edited or translated are formatted as "tw4winexternal".



[Figure 16, Example for all Sysfilters]



**Please make sure that you don't change, delete or move the texts that are formatted in grey (filter information), otherwise errors will occur during the import process after translation.** The filtering information is formatted as "tw4winExternal" and encapsulated between "<!--" and "-->".

## 6 Import

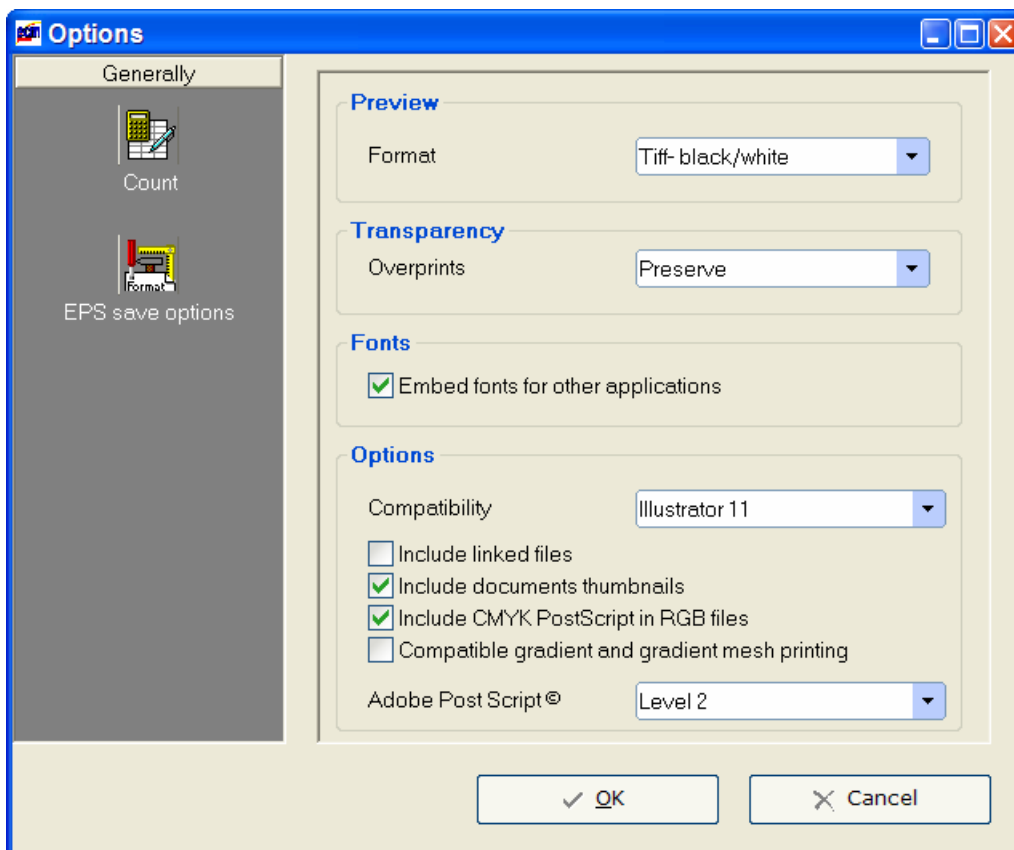
1. Select "RTF files (\*.rtf)" in the combo box in the right corner.

Select the folder in which **the Illustrator CS files and the translated RTF files** are located or use the project menu to get to one of your project folders. The RTF-files will appear. Highlight the files you want to process.

Select the import options you want (refer to:



Saving options for eps-files: Before starting text import back into the **EPS-files** you can configure the following saving options:



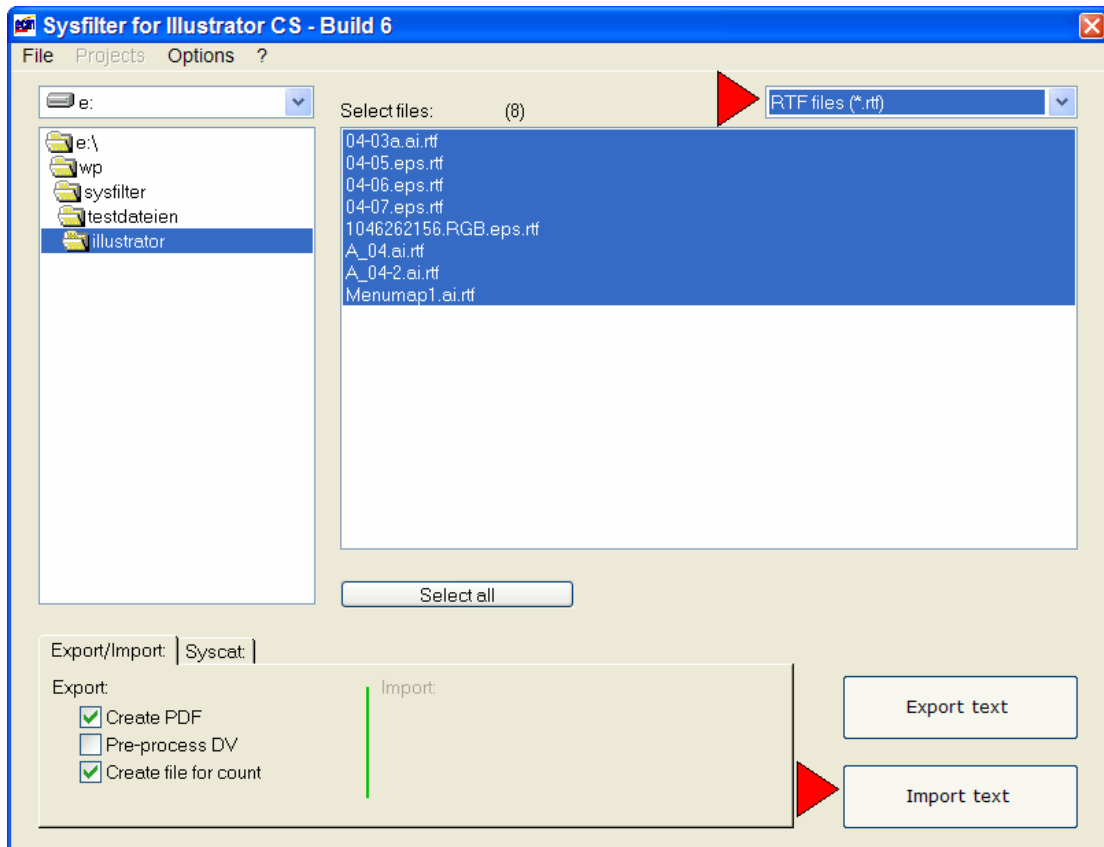
[Figure 17]

If you want to display the eps configuration screen go to the main menu and follow the path **Options >> Options >> EPS save options.**

# Sysfilter for Illustrator CS User Guide



Click onto the "Import text" button to launch the importing process.



[Figure 18]



Progress indication bar appears now and the exporting process is monitored. Depending on the size of the files and the performance of your computer this process may take a few minutes.



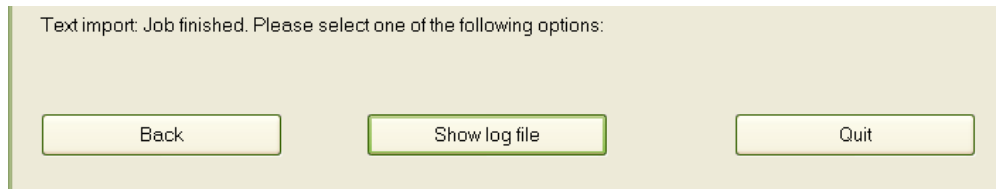
To avoid possible side effects, we recommend that you do not work on your computer during the importing and exporting process.

**You should NEVER use your original files for import or export processing, only copies. Take your time to save the original files and your translated files in a separate folder!**

# Sysfilter for Illustrator CS User Guide



After the import the following dialog appears:



[Figure 19]

- Back → Back to main menu
- Show log file → Log file is displayed. Information about version, file number and options.
- Close → Closes the program



**The Illustrator CS files now contain the translated texts.**

## 6.1 Post-processing



**Remember that automated filter processes require layout control and, depending on the file structure, post layout.**

### 6.1.1 Proofreading / Create PDF files

If you run an export of the translated ai-files/eps-files you can atomize PDF file generation.

- **The PDF files can be used as reference material for translation, proofreading or layout control.**



**If you did already export the texts of a certain project and run a second export Sysfilter for Illustrator CS will overwrite the existing RTF files in this folder. Please make sure that you really want to overwrite the existing files before launching a second exporting process!**

**You should NEVER use your original files for import or export processing, only copies. Take your time to save the original files and your translated files in a separate folder!**

## 7 Export and import log

During export and import a log file is generated and saved in the current directory ("export.log" / "import.log"). The log file contains information about the processing progress and of errors that may have occurred.



You should check the log files after each export and import. The log file can be opened with any common text editor.

## 8 Line/word count

Sysfilter offers the following possibilities of text count:

- a) Sysfilter count and calculation function for text count and price calculation.
- b) Generation of a count file without tags, which you can count with your usual counting tool.

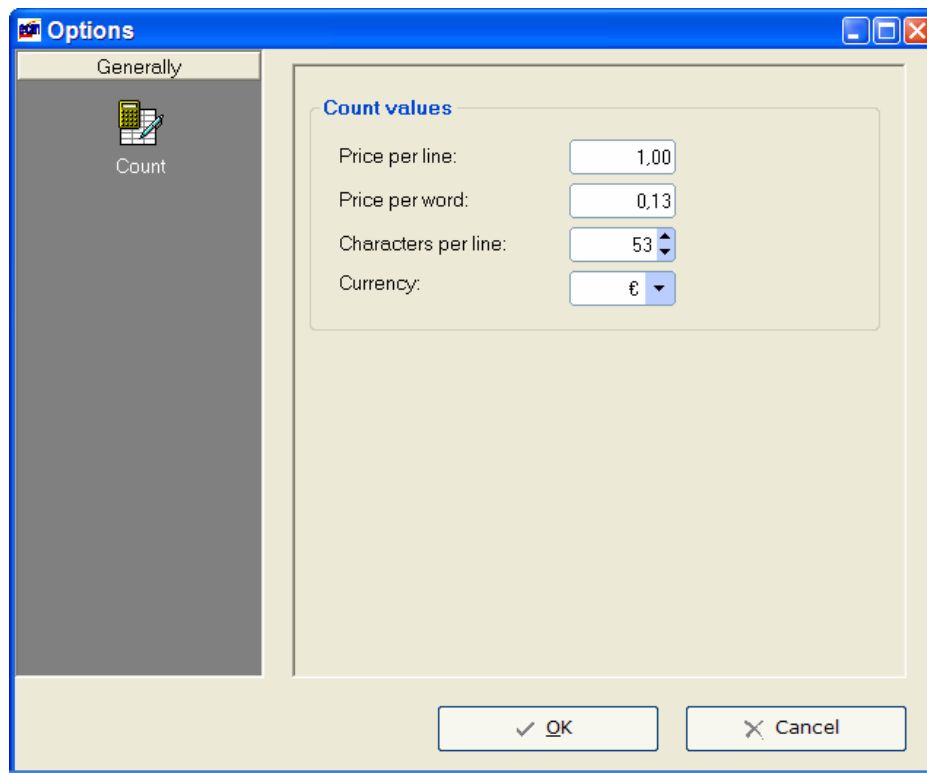
### 8.1 Sysfilter text count and calculation function

Import and export process are documented in a log file. The log file contains information about import and export process as well as **line count**, **word count** and **translation price calculation**. Sometimes you might have found it difficult to calculate the translation price of a project including Adobe Illustrator ai-files/eps-files. The Sysfilter count and calculation function enables you to **calculate the translation price during a simple export/import process**.

# Sysfilter for Illustrator CS User Guide



To use the Sysfilter count and calculation function please proceed as follows:  
Go to the main menu and follow the menu path Options >> Options The following screen will be displayed.



[Figure 20]

Modify the settings of word count and price calculation according to your needs

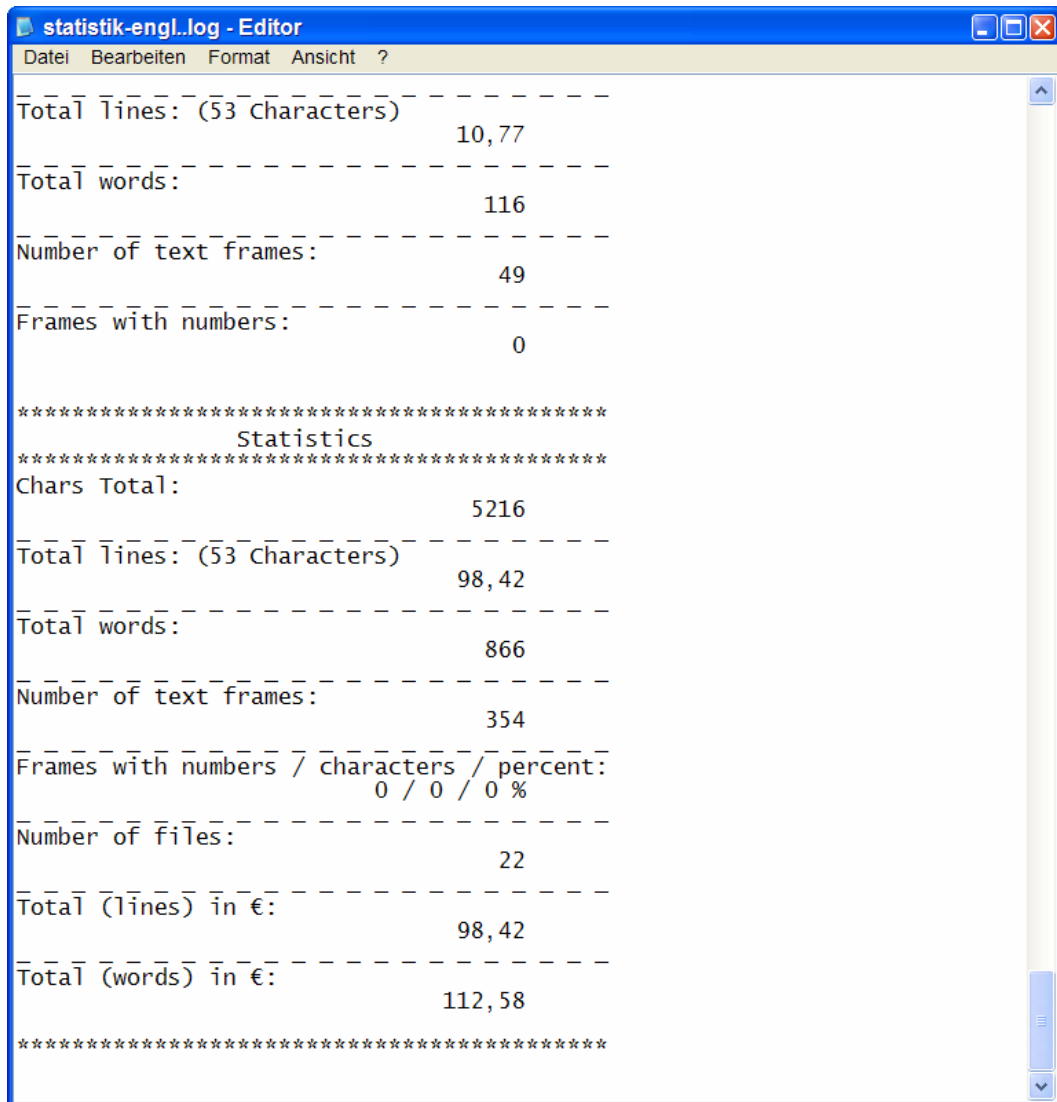
During export/import the counting and calculation information is written into the log file.

To view the log file click onto "Show log file".

The log file ("export.log/import.log") is saved in the same folder as the Illustrator files. If you want to save the log file into a different directory, proceed as follows:

Click onto "Show log file" after the export/import is completed. Then click right mouse button. A file saving dialog will be displayed. You can open the log file with any common text editor.

And that's what a Sysfilter log file looks like:



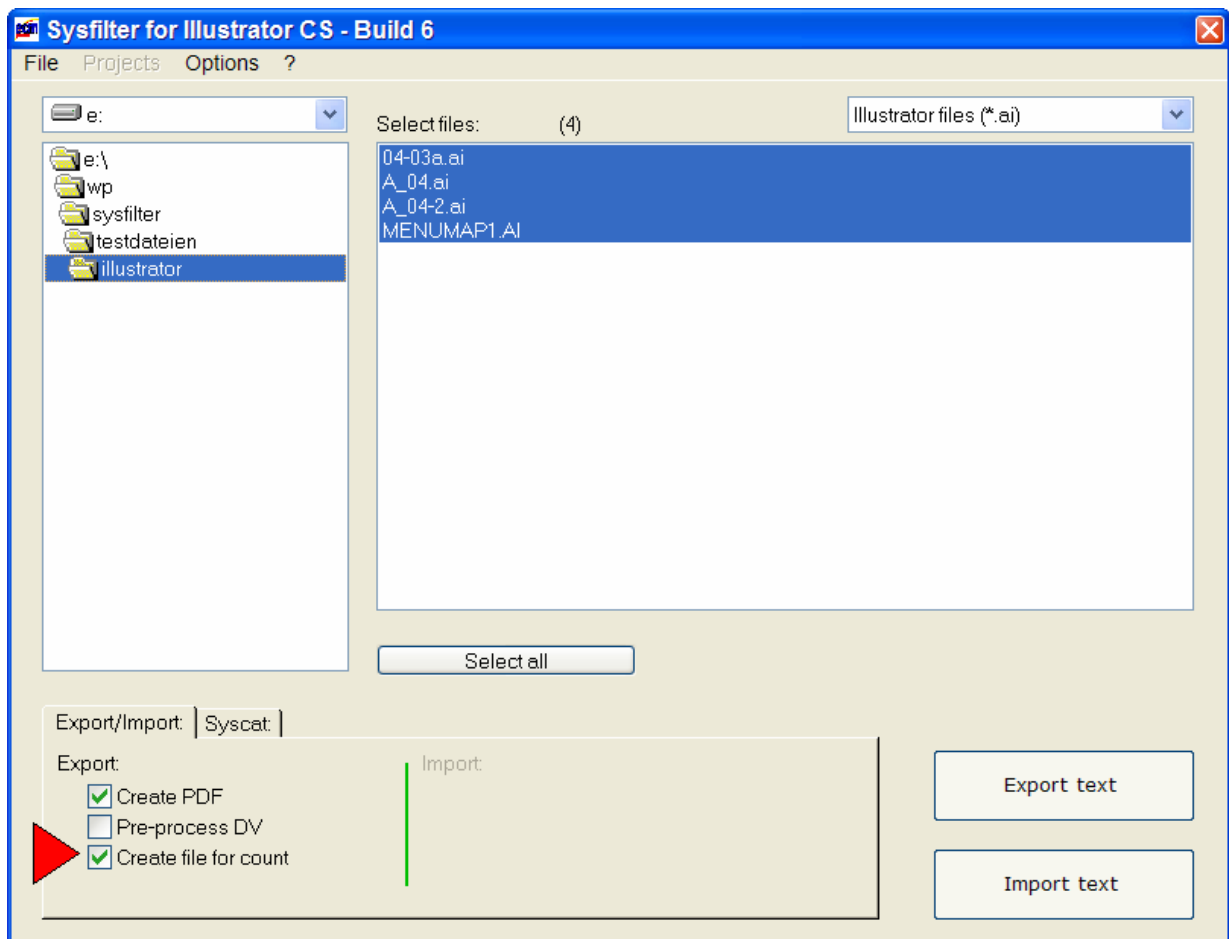
[Figure 21]

## 8.2 Create file for count

If you activate the option "Create file for count" a count file is created in addition to the tagged rtf files. In the count file all tags have been deleted, thus it only contains the text information. Simply count this count file with your usual counting tool.

If you want to generate a file for count, select the export option "Create file for count", as shown in the figure below.

# Sysfilter for Illustrator CS User Guide



[Figure 22]

After the export the count files will be located in the same folder as the Illustrator files. File name of count files: "count\_file name.rtf".



**You should never use count files for translation.** These files should be used only for the purpose of text count. As all tags have been deleted in these files, text import back into the ai-files/eps-files is not possible.

# Sysfilter for Illustrator CS User Guide

---



## 9 Support

If you have any problems or questions concerning Sysfilter for Illustrator please first check this user guide for help.

Check the FAQ section of our website for the latest information about the software.

Use the following e-mail address to get in touch with our support.

e-mail: <mailto:support@ecm-engineering.de>

Detailed information, sample files or screen shots will help us process your request more quickly and accurately.

Please make sure to include the following information:

Operating system:

Word Version:

Illustrator Version:

This will make it easier for us to respond to your request.

## 10 New Features

Sysfilters are updated on a regular basis. If you are already a client of ECM engineering it might be interesting for you to check our website for updates regularly. Clients owning a full version license can order the corresponding updates free of charge.